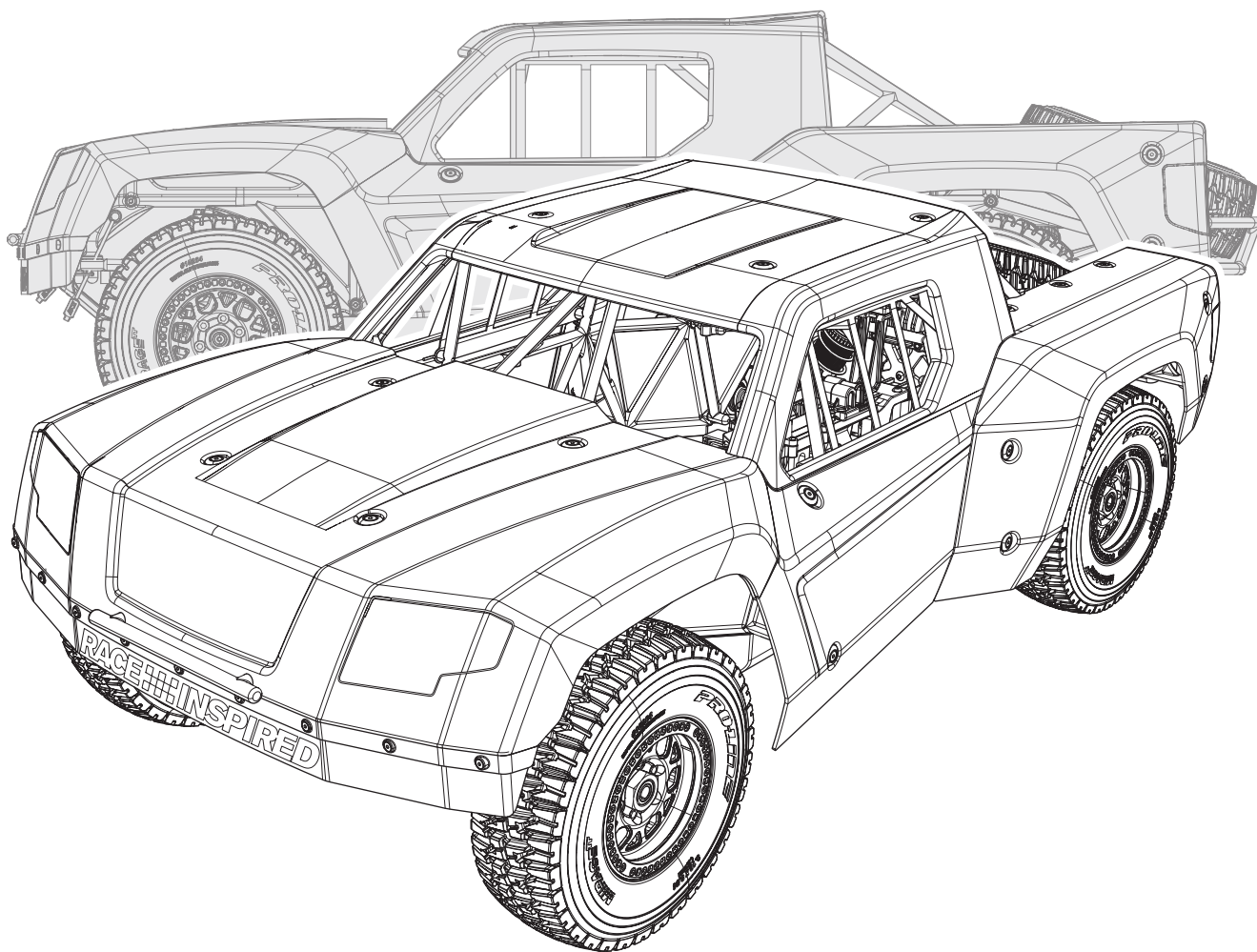


**LOS** RACE **INSPIRED**

# SIVET<sup>®</sup> 3.0

1/5-SCALE 4WD OFF-ROAD ELECTRIC DESERT RACING TRUCK

LOS05022



**Instruction Manual**  
**Bedienungsanleitung**  
**Manuel d'utilisation**  
**Manuale di Istruzioni**

Created 12/25  
1004667

**HORIZON**  
H O B B Y  
DESIGNED • BUILT • BACKED  
est.1985

**NOTICE**

All instructions, warranties and other collateral documents are subject to change at the sole discretion of Horizon Hobby, LLC. For up-to-date product literature, visit horizonhobby.com or towerhobbies.com and click on the support or resources tab for this product.

**MEANING OF SPECIAL LANGUAGE**

The following terms are used throughout the product literature to indicate various levels of potential harm when operating this product:

**WARNING:** Procedures, which if not properly followed, create the probability of property damage, collateral damage, and serious injury OR create a high probability of superficial injury.

**CAUTION:** Procedures, which if not properly followed, create the probability of physical property damage AND a possibility of serious injury.

**NOTICE:** Procedures, which if not properly followed, create a possibility of physical property damage AND a little or no possibility of injury.

**⚠ WARNING:** Read the ENTIRE instruction manual to become familiar with the features of the product before operating. Failure to operate the product correctly can result in damage to the product, personal property and cause serious injury. This is a sophisticated hobby product. It must be operated with caution and common sense and requires some basic mechanical ability. Failure to operate this Product in a safe and responsible manner could result in injury or damage to the product or other property. This product is not intended for use by children without direct adult supervision. Do not use with incompatible components or alter this product in any way outside of the instructions provided by Horizon Hobby, LLC. This manual contains instructions for safety, operation and maintenance. It is essential to read and follow all the instructions and warnings in the manual, prior to assembly, setup or use, in order to operate correctly and avoid damage or serious injury.

**Age Recommendation: Not for children under 14 years. This is not a toy.**

**SAFETY PRECAUTIONS AND WARNINGS**

As the user of this product, you are solely responsible for operating in a manner that does not endanger yourself and others or result in damage to the product or property of others.

This model is controlled by a radio signal subject to interference from many sources outside your control. This interference can cause momentary loss of control, so it is advisable to always keep a safe distance in all directions around your model as this margin will help avoid collisions or injury.

- Never operate your model with low transmitter batteries.
- Always operate your model in open spaces away from full-size vehicles, traffic and people.
- Never operate the model in the street or in populated areas for any reason.
- Carefully follow the directions and warnings for this and any optional support equipment (chargers, rechargeable battery packs, etc.) you use.
- Keep all chemicals, small parts and anything electrical out of the reach of children.
- Never lick or place any portion of the model in your mouth as it could cause serious injury or even death.
- Exercise caution when using tools and sharp instruments.
- Take care during maintenance as some parts may have sharp edges.
- Immediately after using your model, do NOT touch equipment such as the motor, electronic speed control and battery, because they generate high temperatures. You may burn yourself seriously touching them.
- Do not put fingers or any objects inside rotating and moving parts, as this may cause damage or serious injury.
- Always turn on your transmitter before you turn on the receiver in the car. Always turn off the receiver before turning your transmitter off.
- Keep the wheels of the model off the ground when checking the operation of the radio equipment.

**⚠ WARNING AGAINST COUNTERFEIT PRODUCTS:** Always purchase from a Horizon Hobby, LLC authorized dealer to ensure authentic high-quality Spektrum product. Horizon Hobby, LLC disclaims all support and warranty with regards, but not limited to, compatibility and performance of counterfeit products or products claiming compatibility with DSM® or Spektrum technology.



Scan the QR code and select the Manuals and Support quick links from the product page for the most up-to-date manual information.

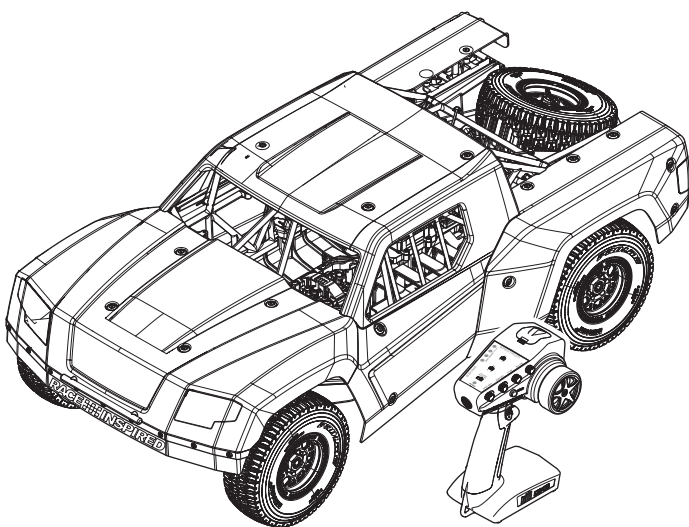
**LOS05022**



## TABLE OF CONTENTS

Vehicle parts.....	4	Transmitter Calibration And Reset.....	10
Water-resistant Vehicle with Waterproof Electronics.....	4	Binding.....	10
Charge the vehicle battery.....	5	Receiver Antenna.....	11
Transmitter Functions.....	5	Vehicle Tuning.....	11
Install the Transmitter Batteries.....	6	Troubleshooting Guide.....	19
Install the vehicle battery.....	6	Limited Warranty.....	20
Power On the Transmitter.....	7	Warranty and Service Contact Information.....	21
Power On the Vehicle.....	7	FCC Information.....	21
Transmitter Controls.....	7	IC Information.....	21
Run Time.....	8	Compliance Information for the European Union.....	22
Driving Precautions.....	8	Exploded Views.....	85
After Your Run.....	9	Replacement Parts.....	92
Maintenance.....	9	Recommended Parts.....	99
Firma 250A Brushless Smart ESC.....	9	Optional Parts.....	100

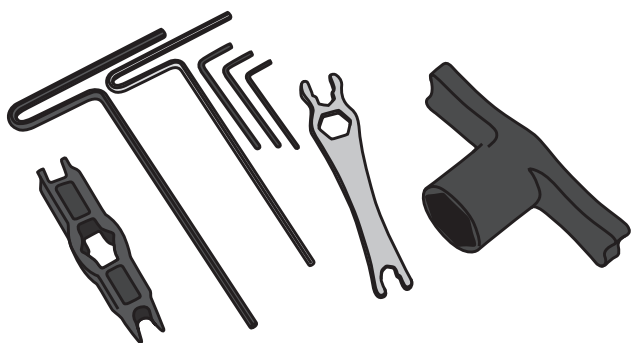
## BOX CONTENTS



## SPECIFICATIONS

<b>Scale</b>	1/5
<b>Length</b>	42.9 inches (1090mm)
<b>Width</b>	21.2 inches (537mm)
<b>Height</b>	15.4 inches (390mm)
<b>Wheelbase</b>	26 inches (660mm)
<b>Weight Without Battery</b>	51.4 lbs (23.31 kg)
<b>Weight With Battery</b>	55.7 lbs (25.27 kg)
<b>Motor</b>	FIRMA 70120 560KV Brushless Motor, Smooth Can: 8mm (SPMXSM5600)
<b>ESC</b>	Firma 250A Brushless Smart ESC, 6S-12S Dual IC5 (SPMXSE2250)
<b>Receiver</b>	SR6200A 6-Channel AVC Surface Receiver (SPMSR6200A)
<b>Servo</b>	1/5 Scale High Torque Servo (SPMSS1000MT)
<b>Transmitter</b>	Spektrum™ DX3 SMART DSMR (SPMR2340)

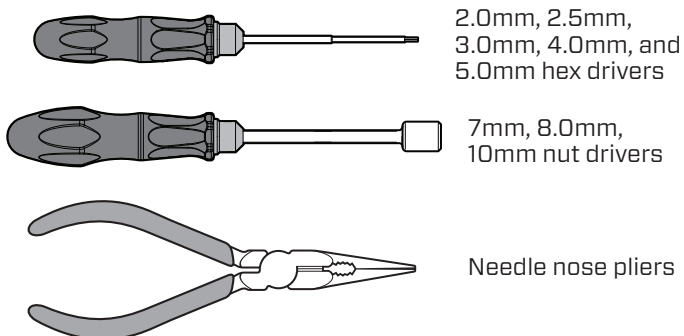
## INCLUDED TOOLS

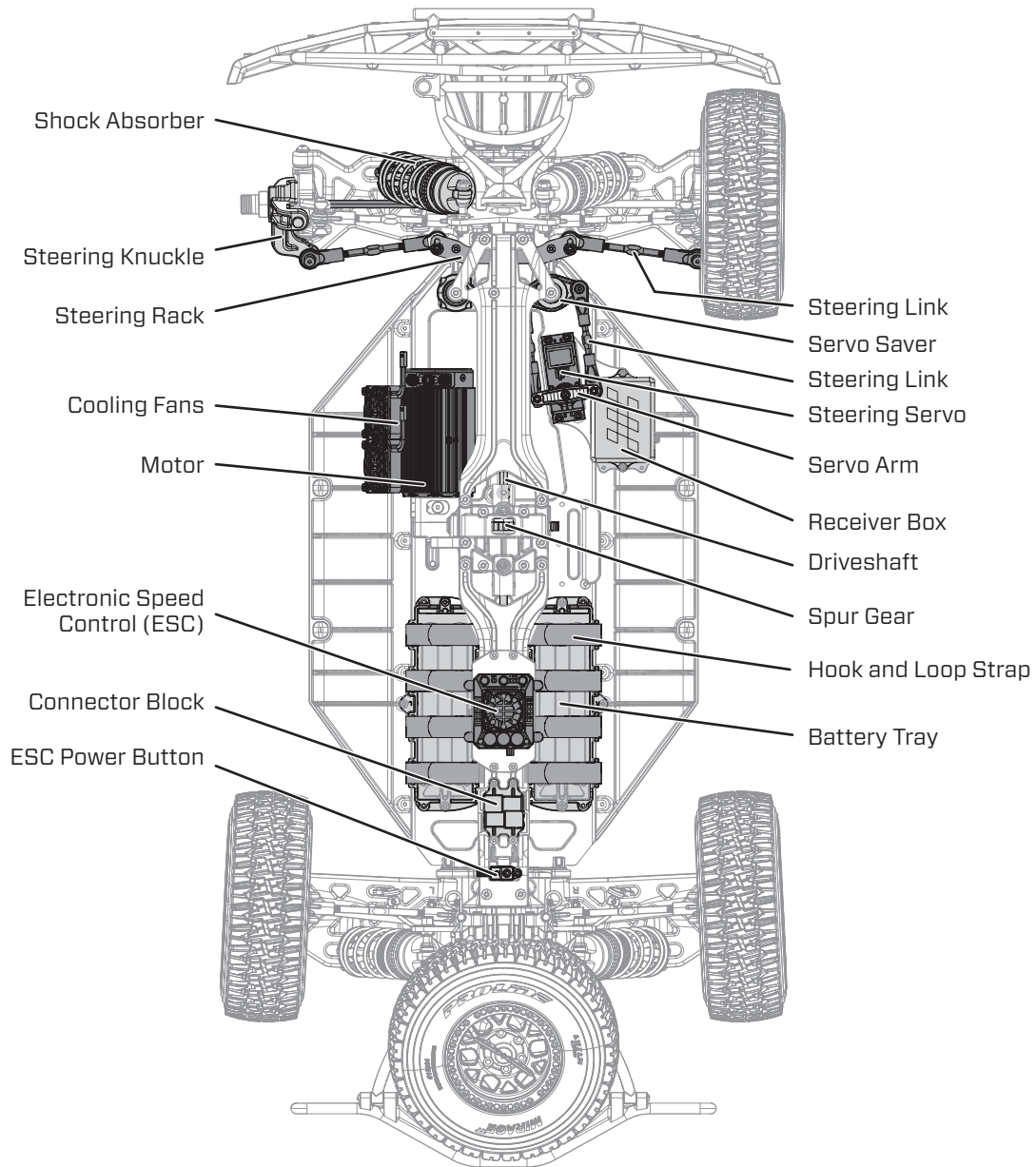


## REQUIRED EQUIPMENT

ITEM	RECOMMENDED
<b>Batteries</b>	(2) 22.2V 7200mAh 6S 120C Smart G2 LiPo IC5 (SPMX726S120)
<b>Charger</b>	Smart S2200 G2 AC Charger, 2x200W (SPMXC2010)

## RECOMMENDED TOOLS





## WATER-RESISTANT VEHICLE WITH WATERPROOF ELECTRONICS

Your new Horizon Hobby vehicle has been designed and built with a combination of waterproof and water-resistant components to allow you to operate the product in many “wet conditions,” including puddles, creeks, wet grass, snow and even rain.

While the entire vehicle is highly water-resistant, it is not completely waterproof and your vehicle should NOT be treated like a submarine. The various electronic components used in the vehicle, such as the Electronic Speed Control (ESC), servo(s) and receiver are waterproof, however, most of the mechanical components are water-resistant and should not be submerged.

Metal parts, including the bearings, hinge pins, screws and nuts, as well as the contacts in the electrical cables, will be susceptible to corrosion if additional maintenance is not performed after running in wet conditions. To maximize the long-term performance of your vehicle and to keep the warranty intact, the procedures described in the “Wet Conditions Maintenance” section below must be performed regularly if you choose to run in wet conditions. If you are not willing to perform the additional care and maintenance required, then you should not operate the vehicle in those conditions.

**⚠ CAUTION:** Failure to exercise caution while using this product and complying with the following precautions could result in product malfunction and/or void the warranty.

### GENERAL PRECAUTIONS

- Read through the wet conditions maintenance procedures and make sure that you have all the tools you will need to properly maintain your vehicle.
- Not all batteries can be used in wet conditions. Consult the battery manufacturer before use. Caution should be taken when using Li-Po batteries in wet conditions.
- Most transmitters are not water-resistant. Consult your transmitter’s manual or the manufacturer before operation.
- Never operate your transmitter or vehicle where lightning may be present.
- Do not operate your vehicle where it could come in contact with salt water (ocean water or water on salt-covered roads), contaminated or polluted water. Salt water is very conductive and highly corrosive, so use caution.
- Even minimal water contact can reduce the life of your motor if it has not been certified as water-resistant or

waterproof. If the motor becomes excessively wet, apply very light throttle until the water is mostly removed from the motor. Running a wet motor at high speeds may rapidly damage the motor.

- Driving in wet conditions can reduce the life of the motor. The additional resistance of operating in water causes excess strain. Alter the gear ratio by using a smaller pinion or larger spur gear. This will increase torque (and motor life) when running in mud, deeper puddles, or any wet conditions that will increase the load on the motor for an extended period of time.

**WET CONDITIONS MAINTENANCE**

- Drain any water that has collected in the tires by spinning them at high speed. With the body removed, place the vehicle upside down and pull full throttle for a few short bursts until the water has been removed.

**CAUTION:** Always keep hands, fingers, tools and any loose or hanging objects away from rotating parts when performing the above drying technique.

- Remove the battery pack(s) and dry the contacts. If you have an air compressor or a can of compressed air, blow out any water that may be inside the recessed connector housing.

- Remove the tires/wheels from the vehicle and gently rinse the mud and dirt off with a garden hose. Avoid rinsing the bearings and transmission.

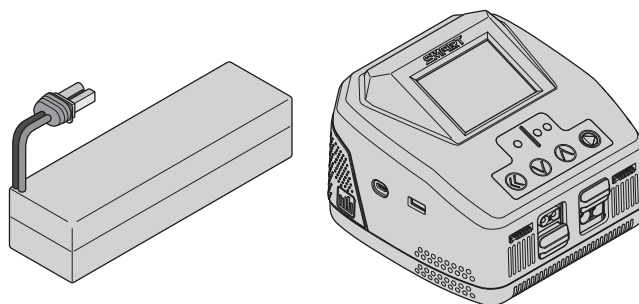
**NOTICE:** Never use a pressure washer to clean your vehicle.

- Use an air compressor or a can of compressed air to dry the vehicle and help remove any water that may have gotten into small crevices or corners.
- Spray the bearings, drive train, fasteners and other metal parts with a water-displacing light oil. Do not spray the motor.
- Let the vehicle air dry before you store it. Water (and oil) may continue to drip for a few hours.
- Increase the frequency of disassembly, inspection and lubrication of the following:
  - Front and rear axle hub assembly bearings.
  - All transmission cases, gears and differentials.
  - Motor—clean with an aerosol motor cleaner and re-oil the bushings with lightweight motor oil.

**CHARGE THE VEHICLE BATTERY**

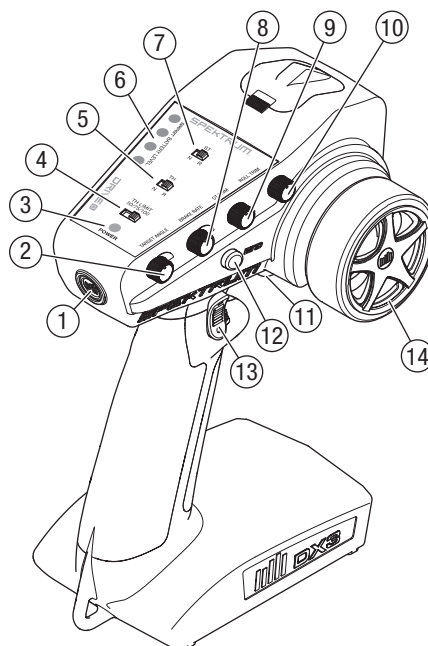
Follow the manufacturer’s directions for your charger to properly charge the vehicle battery. We recommend the Spektrum 22.2V 7200 mAh 6S 120C Smart G2 LiPo IC5 (SPMX726S120) batteries (two required).

**CAUTION:** Only use chargers designed to charge the chosen battery type. Using an incompatible charger or incorrect charge settings could result in fire causing person injury or property damage.



**TRANSMITTER FUNCTIONS**

FUNCTION	
1	Power Button
2	Steering Rate
3	LED Indicator
4	Throttle Limit Switch
5	Throttle Reverse Switch
6	Smart Battery Level
7	Steering Reverse Switch
8	Brake Rate
9	Steering Trim
10	Throttle Trim
11	Throttle/Brake Trigger
12	Bind Button
13	A/B Rocker Switch
14	Steering Wheel



When the transmitter batteries are low, the LED indicator flashes, alternating between red and green, and the transmitter beeps intermittently. The beeps get increasingly persistent as the battery voltage gets lower. Change the transmitter batteries as soon as the LED indicator flashes red and green.

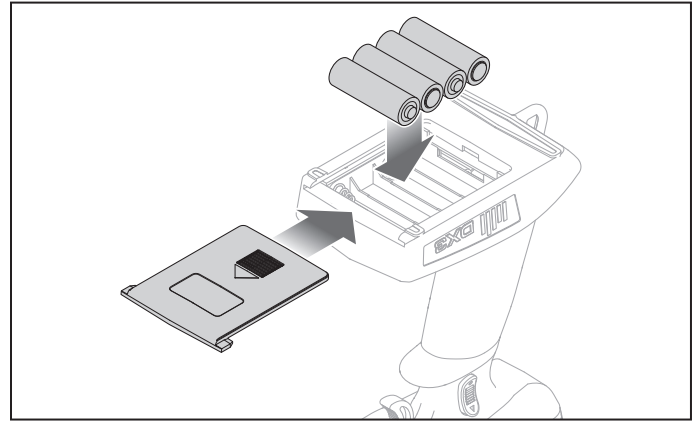
## INSTALL THE TRANSMITTER BATTERIES

This transmitter requires 4 AA batteries (included).

1. Remove the battery cover from the transmitter.
2. Install the batteries as shown.
3. Install the battery cover.

**CAUTION:** If using rechargeable batteries, charge only rechargeable batteries. Charging non-rechargeable batteries may cause the batteries to burst, resulting in injury to persons and/or damage to property.

**CAUTION:** Risk of explosion if battery is replaced by an incorrect type. Dispose of used batteries according to national regulations.



## INSTALL THE VEHICLE BATTERY

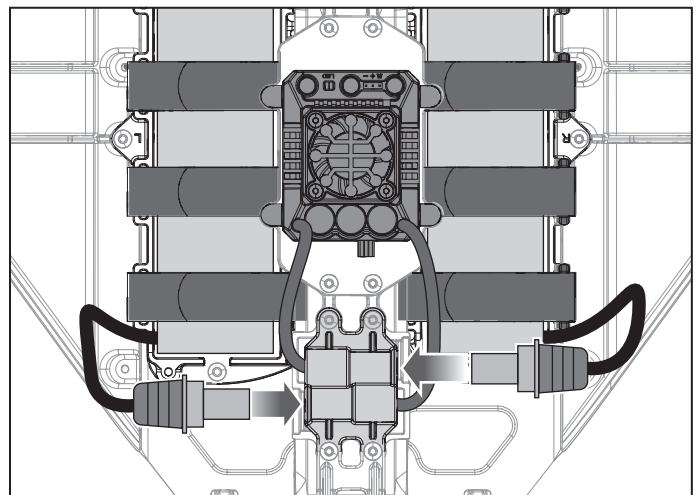
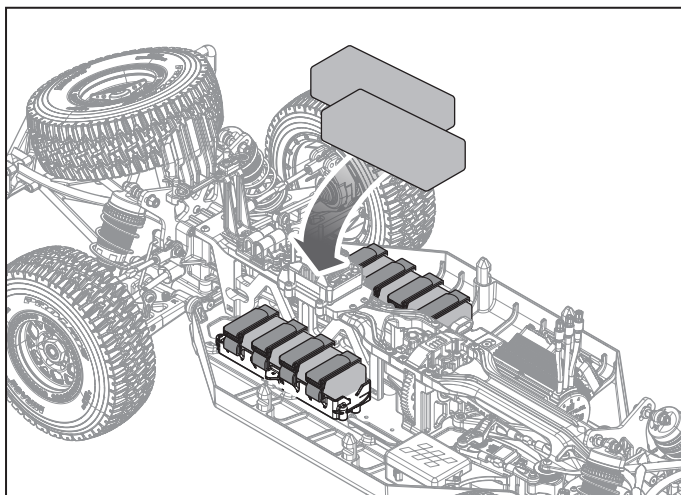
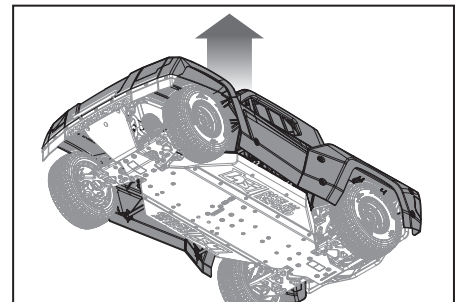
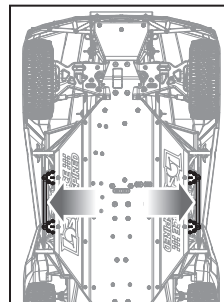
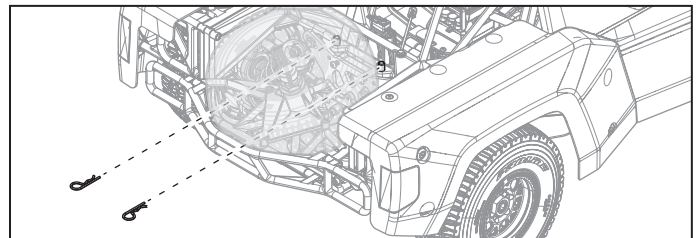
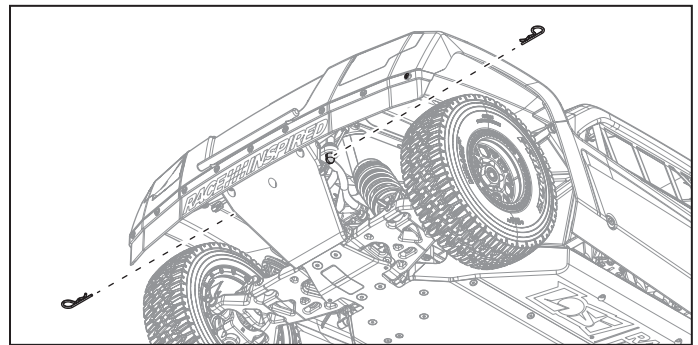
The 5IVE-TE battery tray is designed to accept two 3s-6s hard case LiPo battery packs with IC5 connectors. We recommend two Spektrum 22.2V 7200 mAh 6s 120C Smart G2 LiPo IC5 (SPMX726S120).

To install the recommended batteries:

1. Remove the front body pins from the posts near the skid plate, and the rear pins from the posts in front of the spare tire.
2. Pull the body latches located on the sides of the cage away from the center of the vehicle to release the cage from the mounting pins.
3. Lift the body.
4. Insert the recommended batteries into the battery tray.
5. Secure the batteries with the hook and loop straps.
6. Connect the battery leads to the ESC power leads on the connector block.
7. Reinstall the body and ensure the body latch pins are aligned.

**NOTICE:** Ensure no wires are pinched by the body and cage. Damage to the electronics or loss of control may result.

8. Press down on the body to engage the body latches.
9. Install the front and rear body pins.



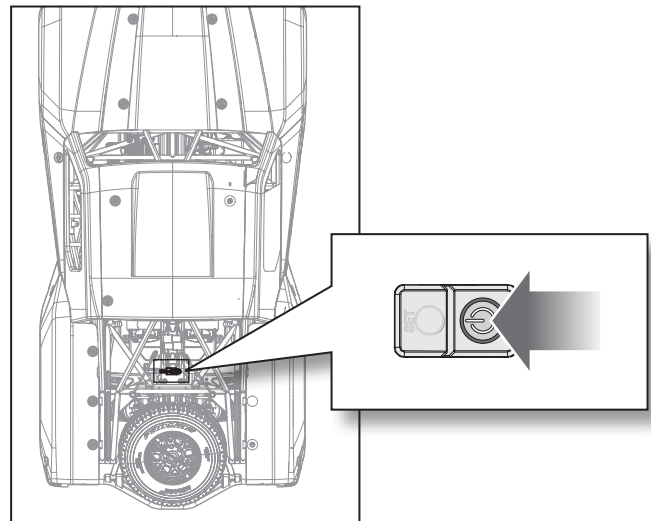
## POWER ON THE TRANSMITTER

To power on the transmitter press the power button located on the back of the transmitter, as shown. The transmitter will emit a tone and the battery level indicator will briefly flash the transmitter battery level.



## POWER ON THE VEHICLE

Press the power button located in front of the rear shock tower, as shown in the illustration. When the vehicle has initialized, the vehicle will emit a series of tones and move the front wheels slightly side to side. The transmitter will emit a series of tones, after which the battery level indicator will display the vehicle battery level.



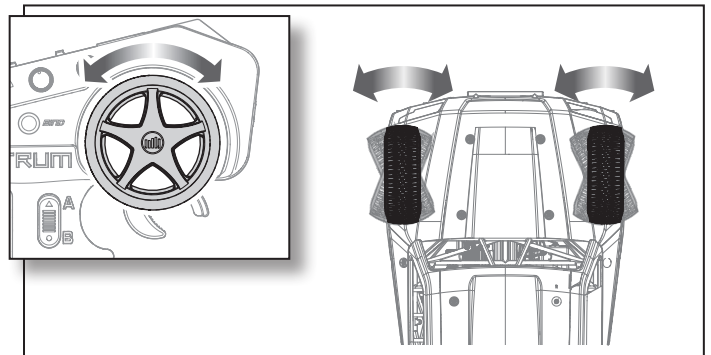
## TRANSMITTER CONTROLS

### STEERING

Rotate the transmitter steering wheel left and right to test the steering.

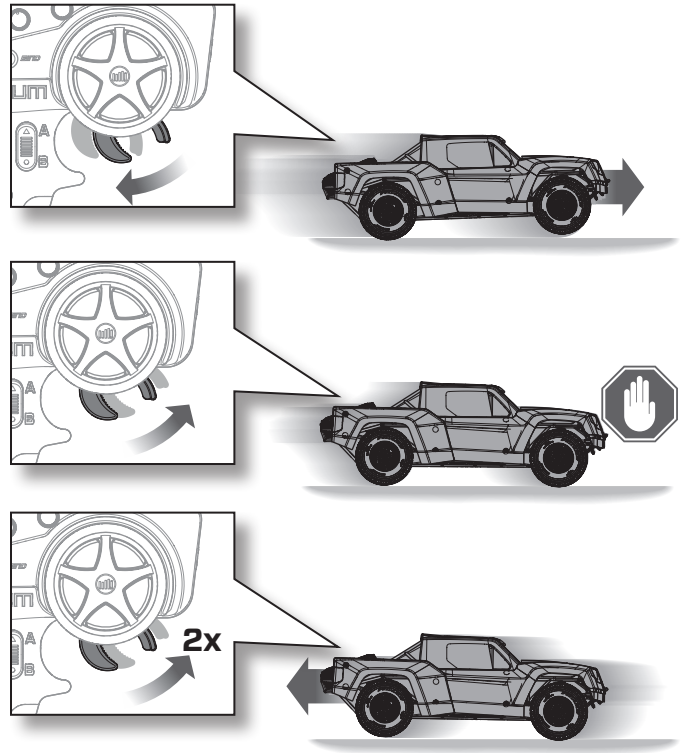
### STEERING TRIMMING

1. Place the vehicle on an open, smooth surface.
2. With the steering wheel centered, apply light throttle, and observe the path of the vehicle.
3. Rotate the ST TRIM knob left or right to correct the path until the vehicle rolls in a straight line without steering input.
  - If the vehicle veers right, rotate the knob left.
  - If the vehicle veers left, rotate the knob right.
4. Power cycle the vehicle and transmitter.



**THROTTLE, BRAKE, AND REVERSE**

- Pull the transmitter trigger to make the vehicle move forward. The farther you pull the trigger, the faster the vehicle will accelerate.
- TIP:** If desired for the initial runs of the vehicle, use the transmitter throttle limit switch to reduce the available throttle to 50 or 75 percent power. When you are comfortable with the vehicle handling characteristics increase the throttle limit to 100 percent to experience the full speed capabilities of the vehicle. Using the throttle limit switch will have an effect on the performance of some tricks.
- Push the transmitter trigger forward to apply the brake.
- Push the transmitter trigger forward a second time to make the vehicle move in reverse.



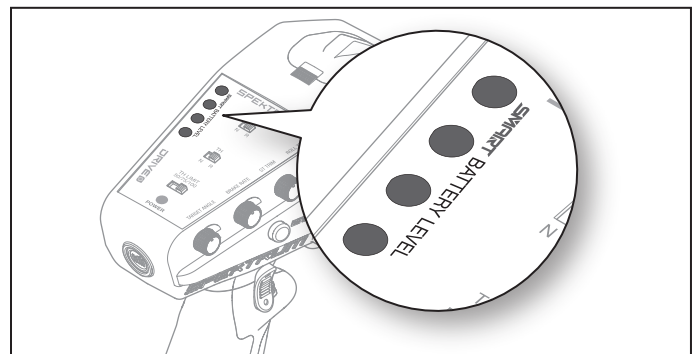
**RUN TIME**

Run time for the vehicle is approximately 8-10 minutes, depending on your throttle usage, driving style, and terrain. The vehicle battery capacity is represented by the Smart battery level indicator on the transmitter. The green LEDs will go off one by one as the battery level falls.

**TIP:** The Smart battery level indicator is most accurate when the vehicle is standing still. The indicator may drop prematurely when the ESC and battery are under load, such as accelerating or driving at a high speed.

When the battery level drops to a low level, a single green LED flashes on the battery level indicator. When the single green LED flashes, recharge or replace the vehicle battery. If you continue to drive beyond the low battery alarm, the low voltage cutoff (LVC) will activate, cutting power to the motor. LVC is a function built into the electronic speed control to protect the battery from over-discharge.

**NOTICE:** Repeated driving to the low voltage cutoff will damage the vehicle battery and shorten the battery life.



**DRIVING PRECAUTIONS**

**CAUTION:** Do not discharge a Li-Po battery below 3V per cell. Batteries discharged to a voltage lower than the lowest approved voltage may become damaged, resulting in loss of performance and potential fire when batteries are charged.

- Always perform a control direction test prior to driving the vehicle.
- Maintain sight of the vehicle at all times.
- Routinely inspect the vehicle for loose wheel hardware.
- Routinely inspect the steering assembly for any loose hardware. Driving the vehicle off-road can cause fasteners to loosen over time.

- Do not drive the vehicle in tall grass. Doing so can damage the vehicle or electronics.
  - Do not apply forward or reverse throttle if the vehicle is stuck. Applying throttle in this instance can damage the motor or ESC.
  - After driving the vehicle, allow the electronics to cool before driving the vehicle again.
- IMPORTANT:** Keep wires away from all moving parts.
- Check for free suspension movement. All suspension arms and steering components should move freely. Any binds will cause the vehicle to handle poorly.

## AFTER YOUR RUN

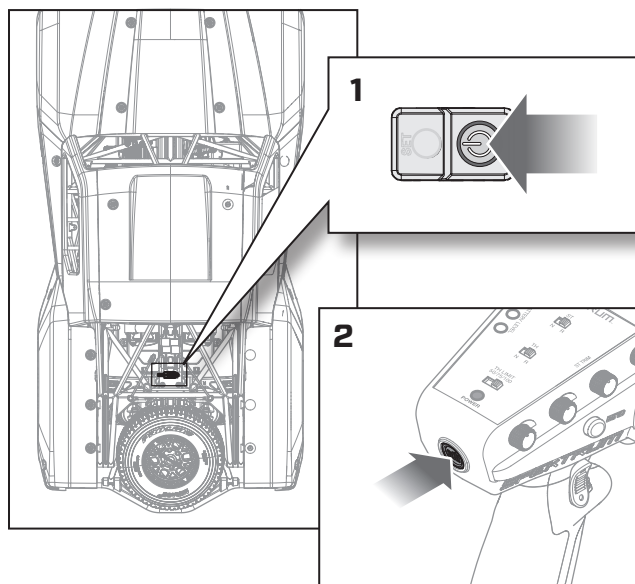
When you are finished with your run:

1. Power the vehicle off by pressing and holding the power button until the LED turns off.
2. Power the transmitter off by pressing and holding the power button until the power LED turns off.
3. Disconnect the vehicle battery lead from the ESC power lead.

**NOTICE:** Never leave the battery lead connected to the vehicle when not in use. Damage to the battery or vehicle may result.

4. Remove the vehicle battery.
5. Recharge the vehicle battery or charge to storage level if you are done running the vehicle for the day.

**CAUTION:** Only use chargers designed to charge the chosen battery type. Using an incompatible charger or incorrect charge settings could result in fire causing person injury or property damage.



## MAINTENANCE

Just like a full size car or truck your RC vehicle must undergo periodic maintenance in order to ensure peak performance. Preventative maintenance will also help avoid needless breakages which could result in costly repairs. Below are some suggestions to properly maintain your vehicle:

- Clean the chassis of any dirt and debris
- Check for loose screws on the chassis
- Check the steering operation for any binding
- Check the driveline for smooth, bind free operation
- Inspect shock absorbers for smooth dampened operation
- Replace any noticeably bent or broken parts
- Check for wear on the ball joints in the steering and suspension links (replace if necessary)
- Check driveshaft set screws and apply thread locking compound if necessary
- Check the wheel nuts for tightness
- Ensure the wheel beads are still firmly bonded around the entire circumference of the rim
- Check for any loose connections or frayed wiring
- Check the receiver antenna for damage
- Replace the transmitter batteries when indicated by the transmitter, as described in the Transmitter Functions section

## FIRMA 250A BRUSHLESS SMART ESC

### ESC AND TRANSMITTER CALIBRATION

1. Begin with the transmitter and receiver binding complete.
2. Set your transmitter's throttle channel to 100% travel and trim to neutral.
3. Turn the brake rate knob all the way up to 100% max travel.
4. Turn on your transmitter and connect a battery to the ESC but don't power it on.
5. Press and hold the Set button while turning on the ESC. When the red LED begins to flash, release the Set button. The ESC will enter programming mode if the button is pressed for more than three seconds.

**TIP:** The red LED should be flashing when the ESC enters calibration mode. If the green LED is flashing the ESC is in programming mode.

6. Leave the throttle trigger at the neutral position, then press and release the Set button. The red LED will stop flashing, the green LED will flash one time and the motor will make a tone to indicate the neutral position has been accepted.
7. Hold the throttle trigger at the full throttle position then press and release the Set button. The green LED will flash twice and the motor will make two tones to indicate the full throttle position has been accepted.
8. Hold the throttle trigger at the full brake position then press and release the Set button. The green LED will flash three times and the motor will make three tones to indicate the full brake position has been accepted.

The motor will operate normally after calibration is completed.

### ESC LED INDICATOR

LED INDICATOR	LED CODE
ESC turned On, LED indicator is Off	Throttle trigger is in the neutral zone
Red LED illuminated	ESC is operating in forward, reverse or brake
Red and Green LED illuminated	ESC is at full throttle, full brake, or full reverse
LED flashes red once and one signal pulse per second	LVC protection activated. (Detected by entire voltage of battery)
LED flashes green with short single pulses	The ESC is in thermal shutoff mode
LED flashes red with two short pulses repeating	Battery under voltage (cell count too low)
LED flashes green with three short pulses repeating	The ESC has exceeded the continuous current limit
LED flashes green with four short pulses repeating	The ESC has failed the self test
LED flashes green with five short pulses repeating	Capacitor temp has been exceeded

## ESC PROGRAMMABLE OPTIONS

PROGRAMMABLE ITEMS	PARAMETER OPTIONS								
	1	2	3	4	5	6	7	8	9
1. Running Mode	Forward w/ Brake	Forward/Reverse w/ Brake	Forward/Reverse Direct						
2. Drag Brake Force	0%	2%	4%	6%	8%	10%	12%	14%	16%
3. Low-voltage Cutoff	3.2V	3.3V	3.4V	3.5V	3.6V	3.7V			
4. Start Mode/Punch	Level 1	Level 2	Level 3	Level 4	Level 5	Level 6	Level 7	Level 8	Level 9
5. Max Brake Force	25%	37.5%	50%	62.5%	75%	87.5%	100%	(disabled)	
6. Max Reverse Force	25%	50%	75%	100%					
7. Neutral Range	6% (Narrow)	9% (Normal)	12% (Wide)						
8. Timing (Degrees)	0.0	3.75	7.5	11.25	15.0	18.75	22.50	26.25	
9. Motor Rotation	CCW	CW							
10. BEC Voltage	6.0V	7.4V	8.4V						
11. Battery	LiPo								

■ Default settings

## TRANSMITTER CALIBRATION AND RESET

Calibrating the transmitter may be necessary if any small movements of the vehicle are noticed after the throttle trigger is released.

### To Calibrate the Transmitter:

1. Power on the radio while applying full brake and holding the transmitter bind button to enter calibration mode. While in calibration mode, the transmitter emits a tone and flashes the Power LED orange.
2. Move the throttle, steering and all four knobs, one at a time, through the full range of travel in either direction.
3. Allow the throttle and steering wheel to return to center.
4. Click the transmitter bind button to save the new calibration values.

Resetting the transmitter to the factory settings may be necessary if the pre-programmed settings on transmitter get changed.

### To Reset the Transmitter to Factory Settings:

- Power on the transmitter while holding full brake and full left steering input. The transmitter emits a 'reset' tone. The transmitter is now restored to the default settings, as shipped from the factory.

**IMPORTANT:** If the transmitter is calibrated or reset to factory settings, you must recalibrate the ESC to ensure all of the travels are set properly.

## BINDING

Binding is the process of programming the receiver to recognize the GUID (Globally Unique Identifier) code of a single specific transmitter. The transmitter and receiver are bound at the factory. If you need to rebind, follow the instructions below.

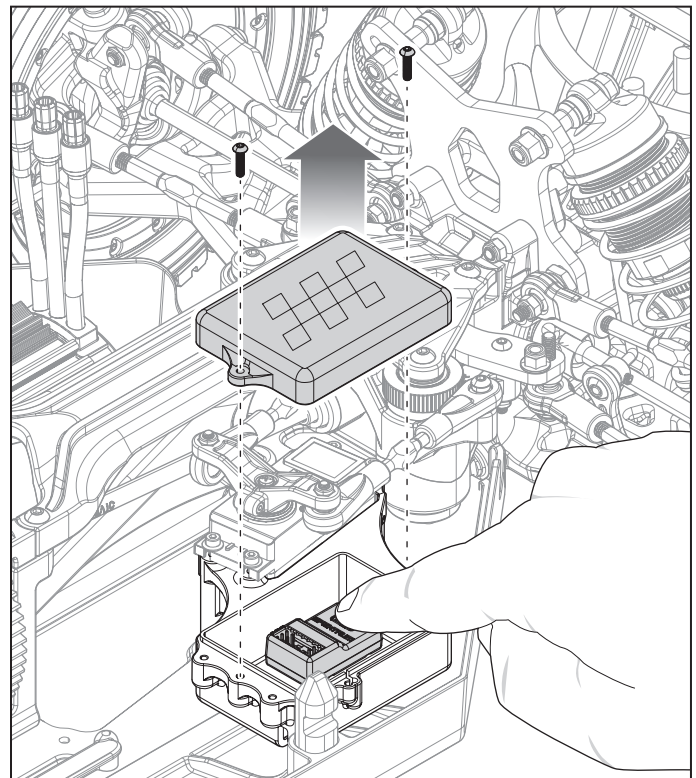
Binding of your vehicle is done by removing the top from the receiver box and pressing the bind button, or inserting a bind plug into the bind port.

1. Connect a fully charged battery pack to the ESC.
2. Insert a bind plug into the BATT/PROG port or press and hold the BIND button on the receiver.
3. Power on the vehicle. The orange LED on the receiver and red LED on the ESC flash, indicating the receiver is in bind mode.
4. Release the bind button if that option is being used.
5. With the throttle trigger at neutral, press and hold the transmitter bind button while powering the transmitter on to put the transmitter in bind mode.

**IMPORTANT:** The throttle should be at neutral to set failsafe.

6. Release the transmitter bind button.
7. The bind process is complete when the orange LED on the receiver remains lit and the red LED on the ESC goes off.
8. Remove the bind plug from the LED light extension and reconnect the LED lights.

You must rebind when different failsafe positions are needed e.g., when throttle or steering reversing has been changed.



## RECEIVER ANTENNA

The SR6200A receiver features a coaxial antenna design. The last inch (32mm) of the antenna tip is the active portion of the antenna, the coaxial portion leading up to it is just an extension.

**WARNING:** Do not kink, cut or damage the antenna wire. The antenna is made of a coaxial wire; if the outer sheath becomes damaged, the receiver will not work properly. If the antenna is damaged in any way, replace the antenna before attempting to use the receiver.

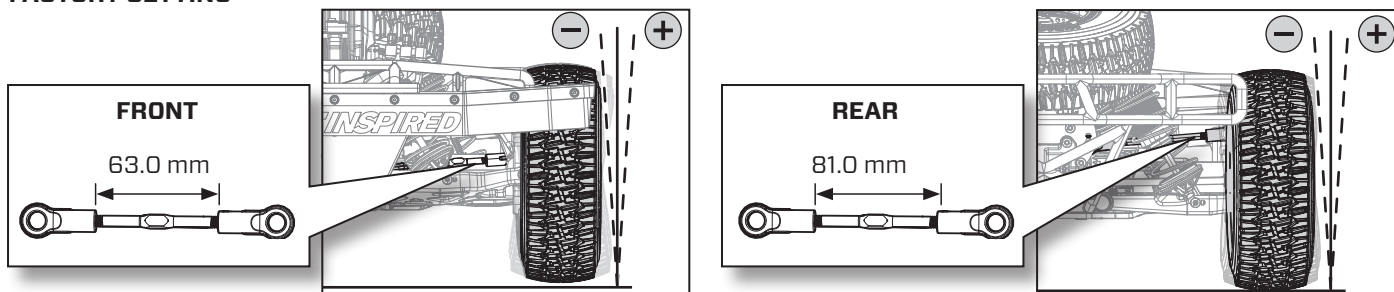
## VEHICLE TUNING

### CAMBER

Always use negative camber (tires leaning in). Standard negative camber settings range from -1/2 to -3 degrees.

CAMBER LINKS		CHARACTERISTICS
Lowering the Link	Front	Increases off-power steering and makes the vehicle more responsive. Handling consistency may decrease as off-power steering increases
	Rear	Increases off-power chassis rotation and makes the vehicle more responsive
Raising the Link	Front	Reduces off-power steering and provides greater handling consistency
	Rear	Reduces off-power chassis rotation and provides greater handling consistency

### FACTORY SETTING



CAMBER		CHARACTERISTICS
More Negative Camber	Front	Quicker reaction with more steering
	Rear	Less rear traction on entry and mid-corner
Less Negative Camber	Front	Slower reaction with less steering
	Rear	More traction on entry and mid-corner

### DROOP

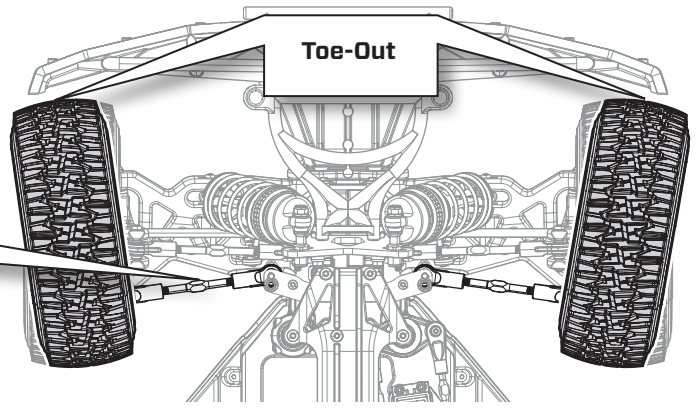
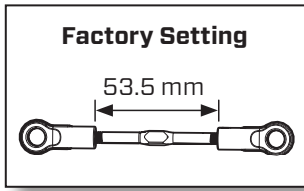
Always measure the droop (down travel) with the shocks on the vehicle. Droop is measured from the center of the top shock mount to the center of the bottom shock screw. More front and rear droop will accelerate better in bumps

when going straight, but can cause the vehicle to traction roll in rough turns. Less front and rear droop will slide over bumps better in turns and may be better on high-speed and high-traction tracks.

DROOP		CHARACTERISTICS
More	Front	Increases on-power steering and lets the rear of the vehicle roll more when applying throttle
	Rear	Increases off-power steering and lets the front of the vehicle roll more when removing throttle
Less	Front	Decrease steering response
	Rear	Good for high-traction surfaces

**FRONT TOE**

Never run front toe-in which can cause limited steering response.



FRONT TOE		CHARACTERISTICS
<b>Toe-Out</b>		Toe-out (shorter steering rods) increases steering response when entering the turn and straight line stability; however, it will decrease on-power steering

**SWAY BARS**

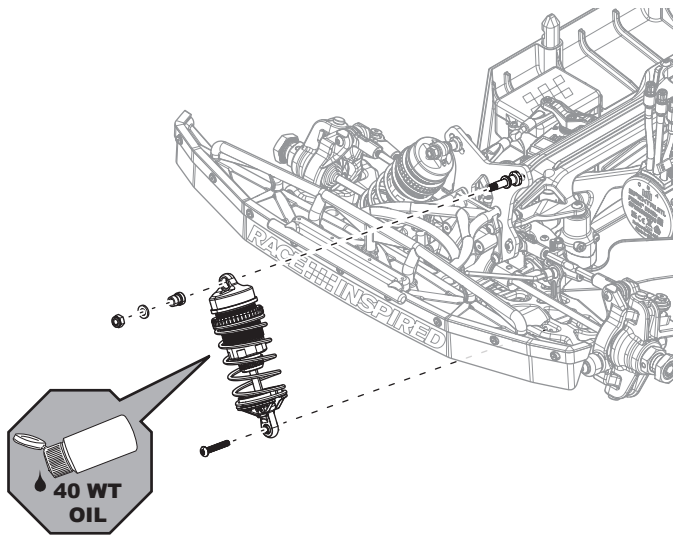
The vehicle is equipped with medium (4mm) sway bars on the front and rear.

SWAY BARS		CHARACTERISTICS
<b>Thinner</b>	Front	Increases front off-power traction, but has less on-power steering
	Rear	Increases rear traction and decreases on-power steering
<b>Thicker</b>	Front	Decreases off-power traction with smoother steering entering the turn, but has more on-power steering
	Rear	Increases stability in turns and on-power steering

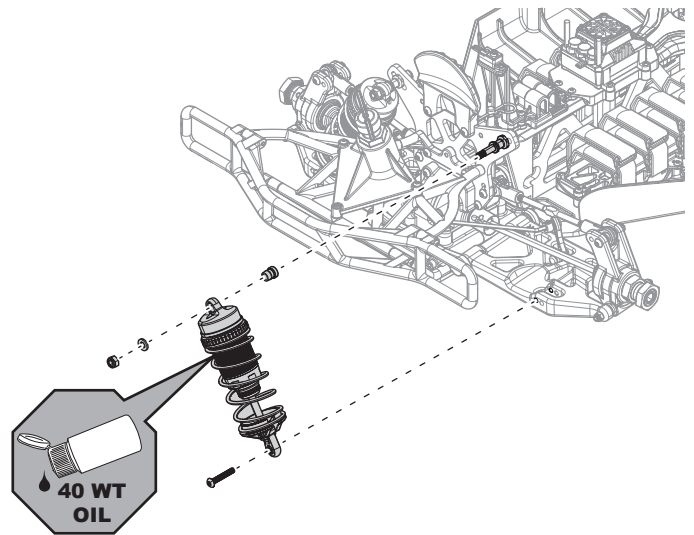
**TIP:** Thicker sway bars are more stable on high-speed, high-traction tracks.

**SHOCK DISASSEMBLY/CLEANING**

Remove the shocks and service as needed. Replace worn parts.

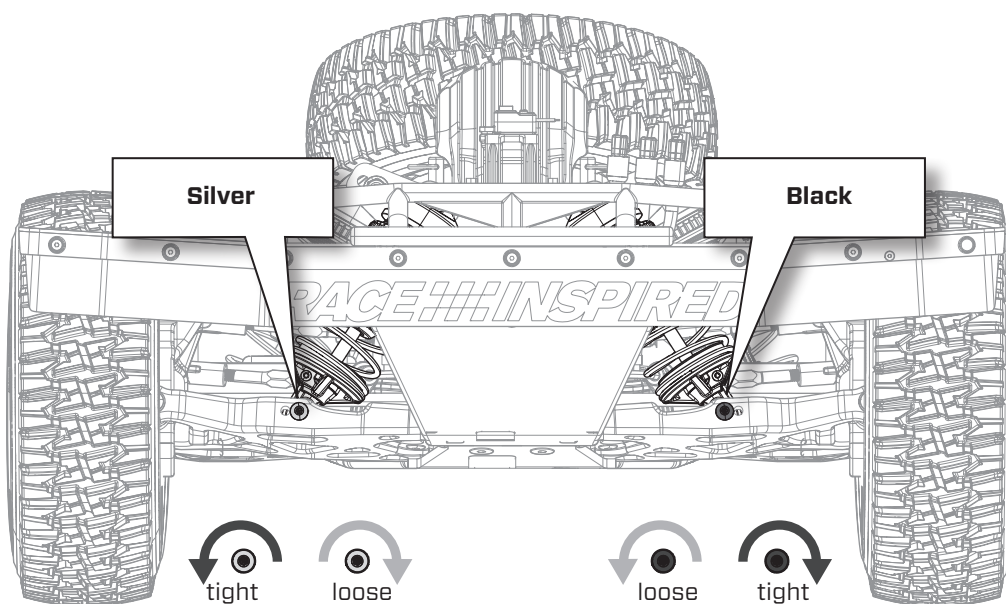


**FRONT**



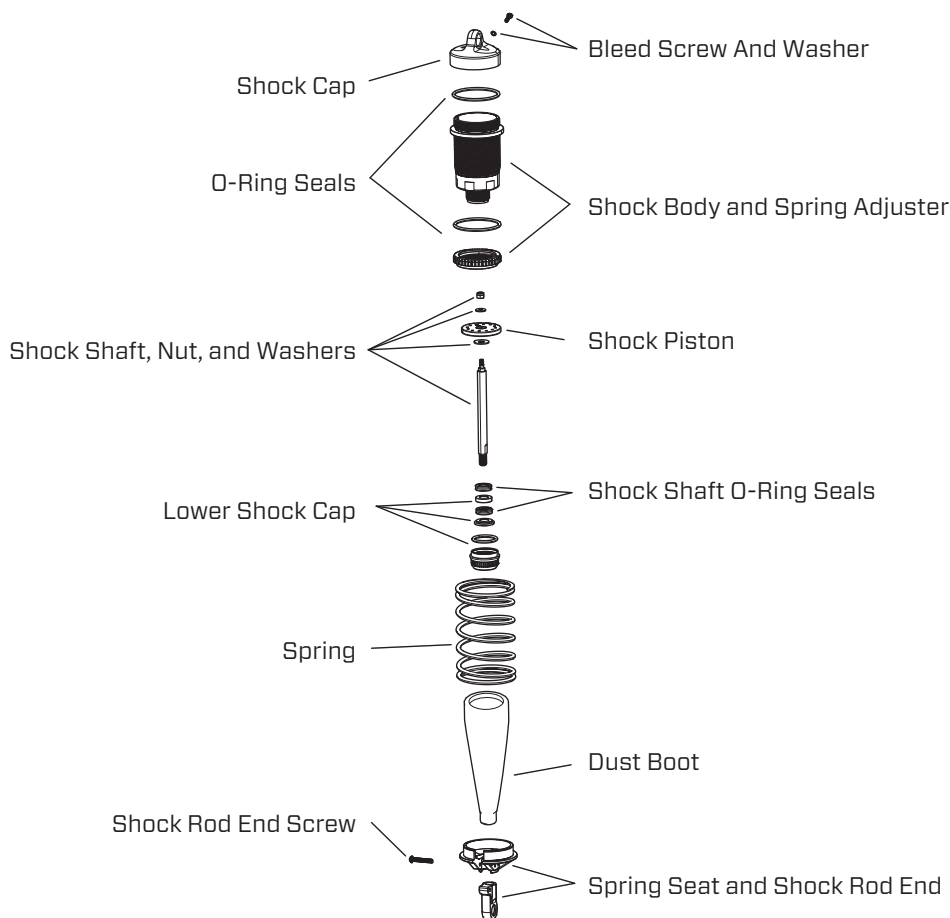
**REAR**

**LOWER SHOCK SCREWS**

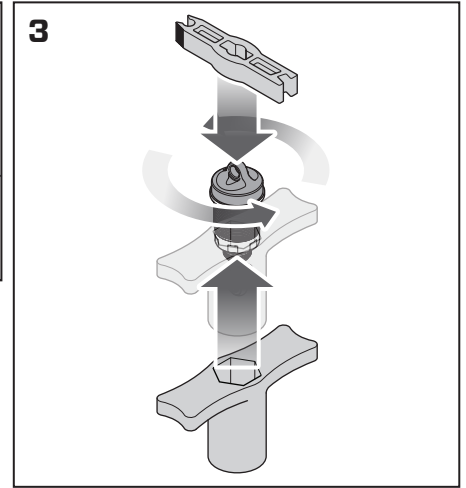
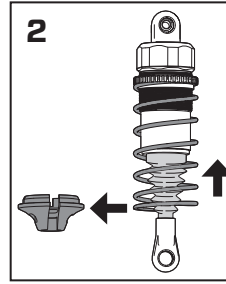


The silver screws used to hold on the right front and left rear shocks are LH reverse thread.  
 To remove the silver shock screws, turn them clockwise, to the right.  
 To tighten the silver shock screws, turn them counter clockwise to the left.

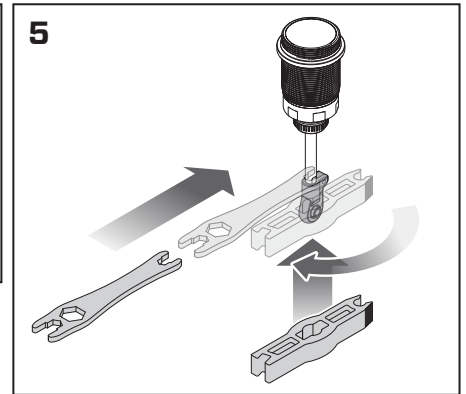
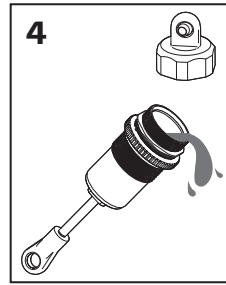
**SHOCK PART DESCRIPTIONS**



1. Remove the button head screw securing the lower spring cup to the shock rod end.
2. Pull the spring up and away from the lower cup. Slide the lower spring cup up and off of the shaft. Clean with a soft brush.
3. To remove the shock cap, use the supplied wheel/shock body wrench and shock/rod end wrench to hold the body and cap. Never use pliers to hold the shock body, as this could cause damage resulting in a non functioning shock.



4. Drain the old shock oil for disposal.
5. Hold the shock shaft with the supplied multi-wrench by the flats on the shaft and use the shock/rod end tool to remove the shock rod end. Remove the lower shock cap, dust cover, O-rings and spacer. Clean the shock body.



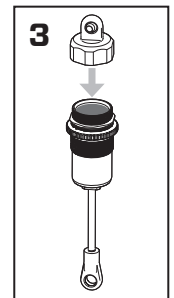
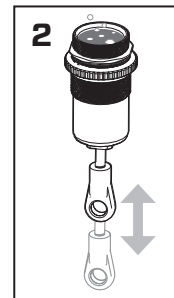
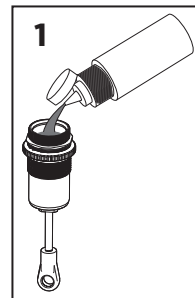
**TIP:** Coat the shock shaft in shock oil when installing new O-Rings.

6. Install new O-rings, re-install the spacer, replace the O-ring and install the lower shock cap. **DO NOT OVER TIGHTEN.** Install the shock shaft through the shock bottom and tighten the bottom cap. Re-install the boot and shock end on the shaft.

**TIP:** Clean the screw and internal threads in the shaft with a spray cleaner. Use medium strength threadlock to secure the piston nut.

**REFILLING/BLEEDING SHOCKS**

1. Fill the shock body 5mm (0.2 in) from the top with 40wt silicone shock oil (TLR74025).
2. Slowly move the piston up and down 5 times, allowing air to rise to the top. Let the shock sit for 5 minutes.
3. With the piston all the way down, fill the shock body 1mm (0.04 in) from the top. Replace the shock cap, spring and spring cup.



**SHOCK OIL**

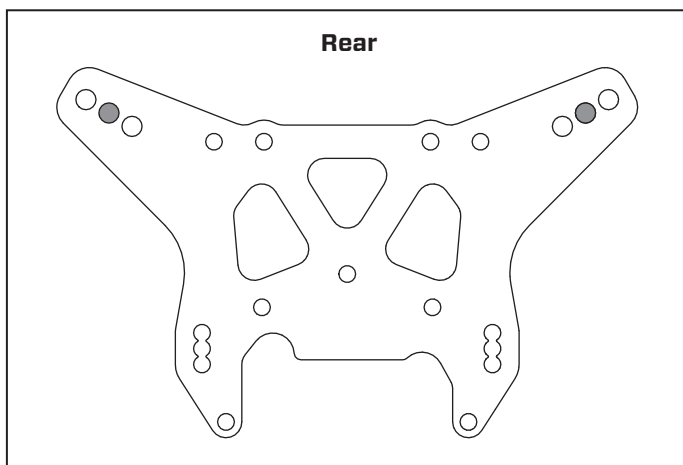
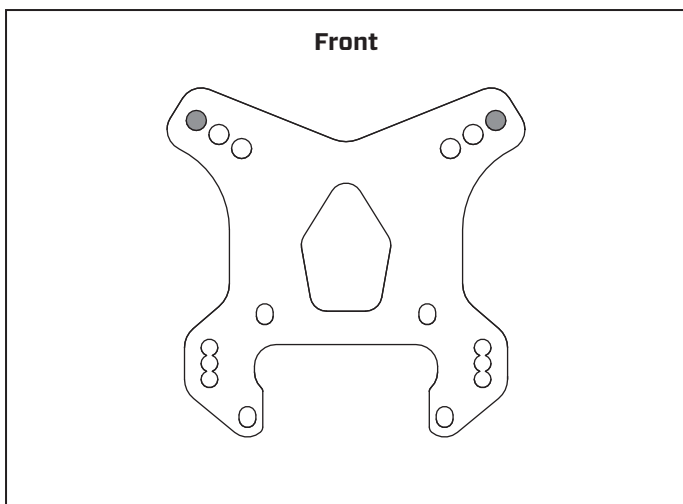
Adjust oil weight when there is a drastic temperature change (20 - 25° F/12 - 14°C). Stock shock oil front and rear is 40wt.

SHOCK OIL	CHARACTERISTICS
<b>Lighter</b>	Responds quicker and creates more chassis roll
	Improved traction on loose/bumpy surfaces
	Use lighter oil as it gets colder
<b>Heavier</b>	Reacts slower and creates less chassis roll
	Increased stability on smooth/high grip surfaces
	Use heavier oil as it gets warmer



### SHOCK MOUNTING POSITIONS

Moving the shocks in on the tower makes the vehicle more forgiving. Moving the shocks out on the tower makes the vehicle more responsive and better for technical tracks. The stock mounting positions are shown below.



SHOCK PISTON CHART	
LOS-3675	2.0mm 6
LOS-3630	2.1mm 6
LOS-3639	2.2mm 6
LOS-3704	Piston Blank

FRONT SPRING CHART	
LOS-3731	11.3lb, Blue
LOS-3736	12.3lb, Red
LOS-3748	13.6lb, White
LOS-3749	14.2lb, Orange

REAR SPRING CHART	
LOS-3737	10.4lb, Blue
LOS-3746	11.3lb, Red
LOS-3745	12.2lb, White
LOS-3735	13.1lb, Orange

■ Stock Part Selection

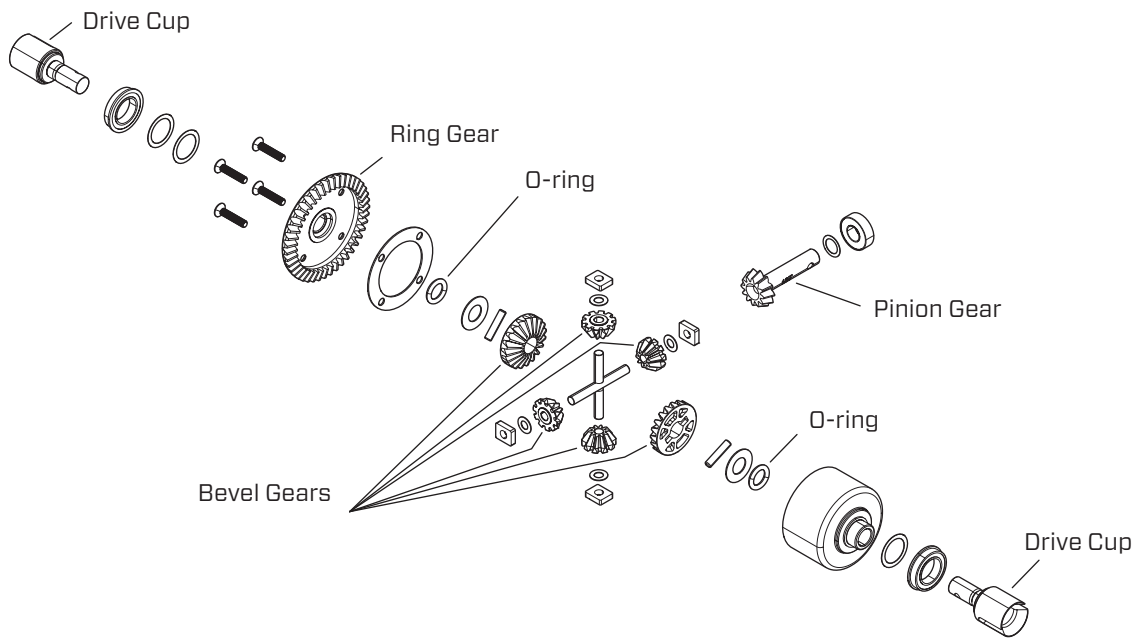
### SHOCK SPRINGS

SPRINGS		CHARACTERISTICS
<b>Softer</b>	Front	Produce more steering
	Rear	Helpful on rough tracks but may hamper jumping ability and allow the chassis to bottom out much easier
<b>Firmer</b>	Front	Decrease steering response
	Rear	Good for big jumps and high-traction surfaces

### RIDE HEIGHT

Set the truck on a flat surface and turn the threaded collars on the shocks evenly so both the front and rear suspension arms are level.

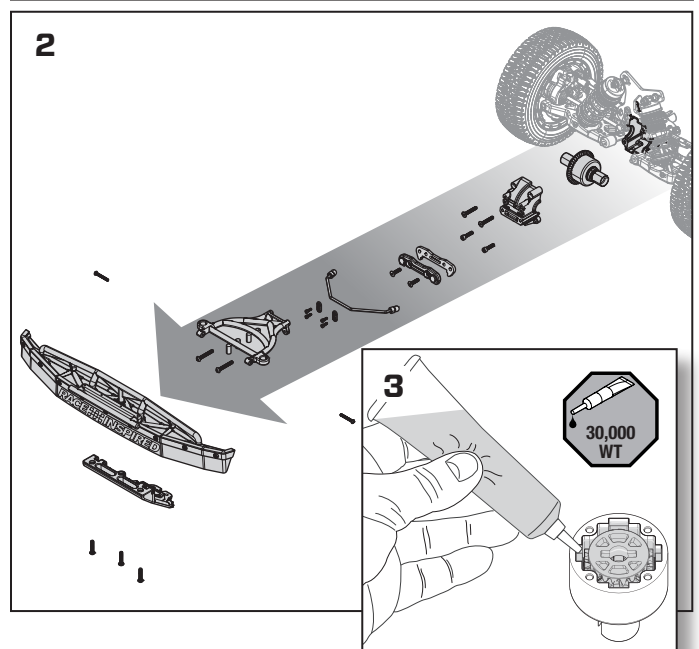
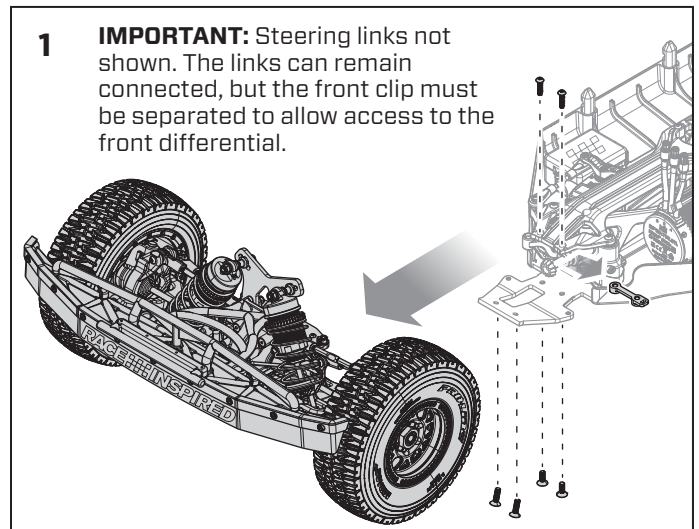
**DIFFERENTIAL PART DESCRIPTIONS**



**FRONT DIFFERENTIAL**

Remove the front differential and service as needed. Replace worn parts.

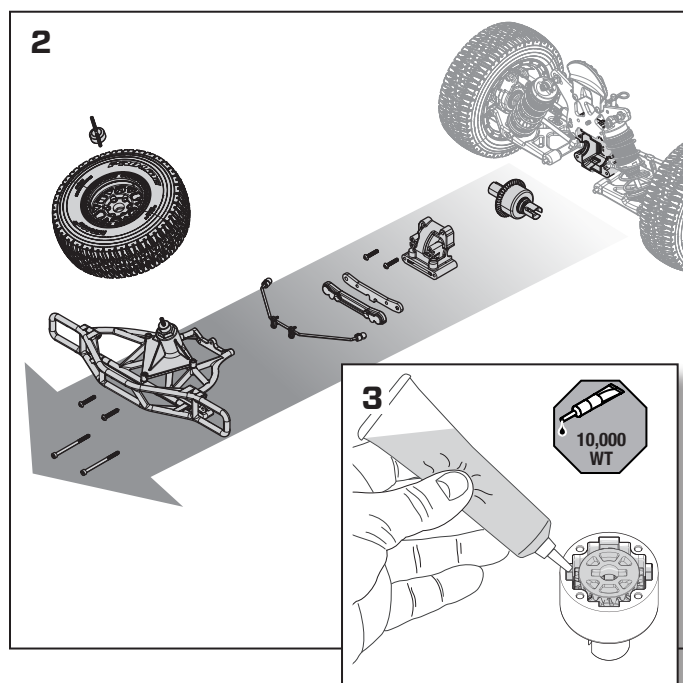
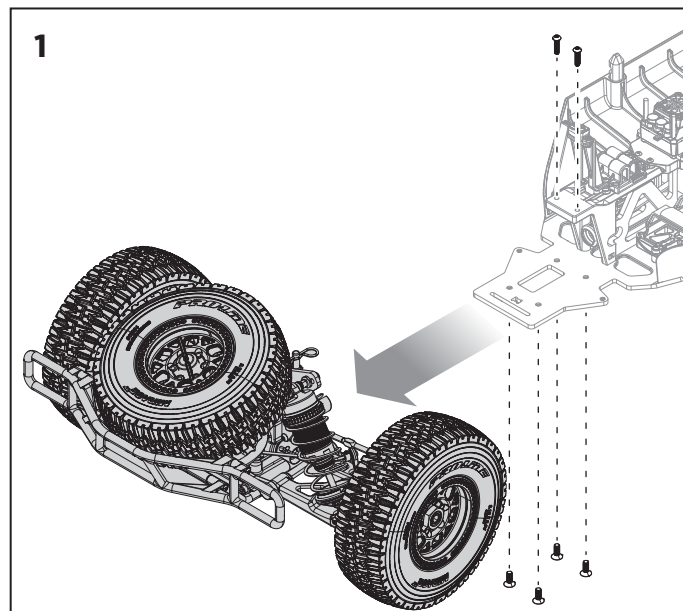
1. Remove the front two screws and bulkhead spacer from the front top plate brace. Remove the 4 lower front bulkhead screws and separate the front clip from the chassis plate.
2. Remove the front bumper, bumper mount, sway bar assembly, lower front center bracket, differential cover and differential, as shown.
3. Check the differential fluid and refill or replace as needed with TLR5285 (30,000CS) fluid. The fluid level should be about 0.12 in (3.0mm) from the top surface of the case. Do not overfill or the differential unit might leak.
4. Check the ring and pinion as well as the bevel gears in the differential. Replace as needed. If fluid is leaking at the drive cups, replace the O-rings. Apply more grease to the ring and pinion (LOSA99209).



## REAR DIFFERENTIAL

Remove the rear differential and service as needed.  
Replace worn parts.

1. Remove the two upper screws in the rear chassis brace and four lower screws in the rear bulkhead. You may also need to loosen the rear chassis brace screws to remove the rear clip as shown.
2. Remove the spare tire, rear bumper, sway bar assembly, lower rear center bracket, differential cover and differential, as shown.
3. Check the differential fluid and refill or replace as needed with TLR5282 (10,000CS) fluid. The fluid level should be about 0.12 in (3.0mm) from the top surface of the case. Do not overfill or the differential unit might leak.
4. Check the ring and pinion as well as the bevel gears in the differential. Replace as needed. If fluid is leaking at the drive cups, replace the O-rings. Apply more grease to the ring and pinion (LOSA99209).



**CENTER DIFFERENTIAL**

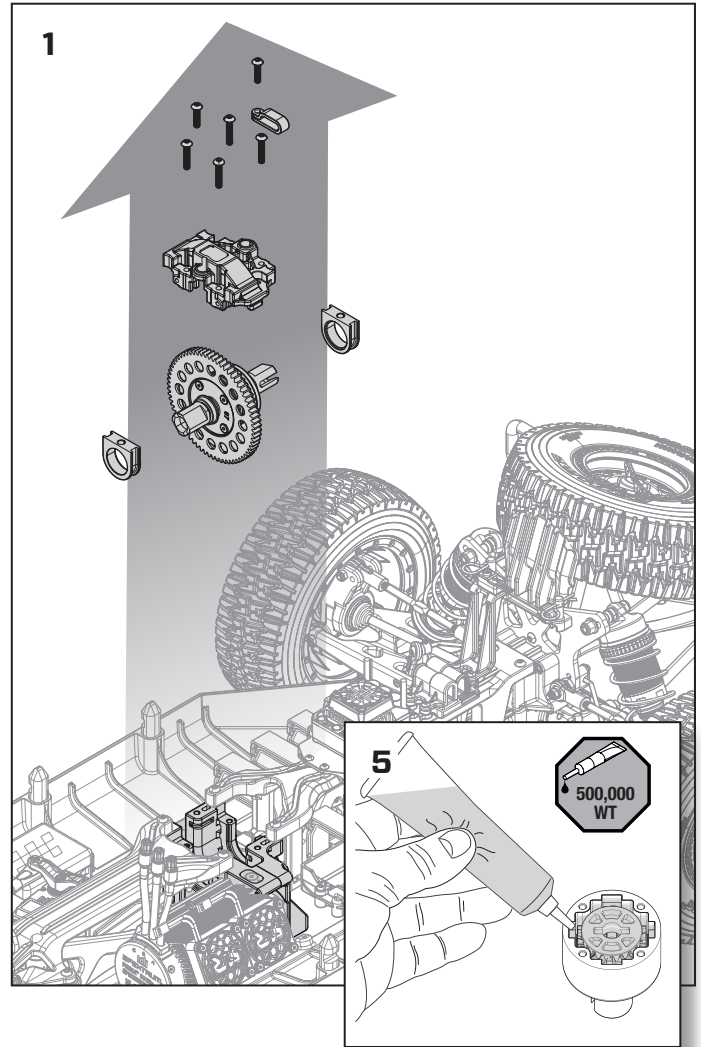
Remove the center differential and service as needed. Replace worn parts.

1. Remove the six screws from the top plate on the center differential mount and remove the top plate.
2. Remove the center differential assembly.
3. Separate the center differential from the bearing carriers.

**IMPORTANT:** Inspect the bearing carriers and replace if worn or damaged.

4. Inspect the spur gear and motor pinion. Replace if worn or damaged.
5. Check the differential fluid and refill or replace as needed with TLR75009 (500,000CS) fluid. The fluid level should be about 0.12 in (3.0mm) from the top surface of the case. Do not overfill or the differential unit might leak.
6. Inspect the bevel gears in the differential. Replace as needed. If fluid is leaking at the drive cups, replace the O-rings.

**TIP:** Use medium strength (BLUE) threadlock on both the spur gear and diff cup cover screws.



**DIFFERENTIALS**

DIFFERENTIAL	WEIGHT OIL	LIGHT WEIGHT OIL	HEAVIER WEIGHT OIL
<b>Front</b>	30,000	Increases off-power steering. Oil that is too thin will make diff action inconsistent	Increases off-power stability and on-power steering
<b>Center</b>	500,000	Has less forward drive and can unload the drivetrain easier under acceleration, which can be good on rough and slick tracks	More acceleration and increases on-power steering, but decreases off-power steering. Thicker center diff oil is better on high traction/smooth tracks
<b>Rear</b>	10,000	Has more side traction and increased steering in the middle of a turn	Less steering in the middle of the turn but more forward traction

**GEARING**

- Stock gearing for the 5IVE-TE 3.0 is 67/17
- For large, open areas where more speed is desired, 18-21T pinion gears are available.
  - For more technical tracks that require more bottom end, 13-16T pinion gears area available.



## TROUBLESHOOTING GUIDE

PROBLEM	POSSIBLE CAUSE	SOLUTION
Vehicle does not operate	Battery not charged or plugged in	Charge battery/plug in
	ESC switch not "On"	Turn on ESC switch
	Transmitter not "On" or low battery	Turn on/replace batteries
Motor runs but wheels do not rotate	Pinion not meshing with spur gear	Adjust pinion/spur mesh
	Pinion spinning on motor shaft	Tighten pinion gear setscrew on motor shaft flat spot
	Transmission gears stripped	Replace transmission gears
	Drive pin broken	Check and replace drive pin
Steering does not work	Servo plug not in receiver properly	Make sure the steering servo plug is connected to the receiver steering channel, noting proper polarity
	Servo gears or motor damaged	Replace or repair servo
Steering does not turn in one direction	Servo gears damaged	Replace or repair servo
Motor does not run	Motor wire connection is loose or not firmly seated	Ensure that the bullet plug is fully seated into the ESC
	Motor wire broken	Repair or replace as needed
	ESC damaged	Contact Horizon Hobby Product Support
ESC gets hot	Motor over-gearred	Use smaller pinion or larger spur gear
	Driveline bound up	Check wheels and transmission for binding
Poor run time and/or sluggish acceleration	Battery pack not fully charged	Recharge battery
	Charger not allowing full charge	Try another charger
	Driveline bound up	Check wheels, transmission for binding
Poor range and/or glitching	Transmitter batteries low	Check and replace
	Vehicle battery low	Recharge battery
	Antenna wire broken or kinked	Replace receiver
AVC system does not initialize and transmitter emits a descending tone and flashes battery level LEDs	Vehicle moving during initialization	Set the vehicle on a stationary surface until the AVC system initializes
Transmitter Power LED flashes green and red	Transmitter batteries low	Replace the transmitter batteries
Single green LED flashes on the transmitter Smart battery level indicator	Vehicle battery is low	Recharge or replace with a freshly charged vehicle battery
Vehicle does not track in a straight line	Transmitter is out of trim	Adjust the ST Trim knob until the vehicle tracks in a straight line
Vehicle wheels roll without throttle input	Throttle trim is not centered	Adjust throttle trim so the wheels are not spinning when the throttle trigger is left untouched.
	Transmitter is out of calibration	Perform a transmitter calibration, as described in this manual
Steering travel is uneven	Vehicle not power cycled after large steering trim adjustment	Power cycle the vehicle after steering trim adjustments are completed
	End points not setup properly	Calibrate and adjust steering travel in transmitter

## LIMITED WARRANTY

### What this Warranty Covers

Horizon Hobby, LLC, (Horizon) warrants to the original purchaser that the product purchased (the "Product") will be free from defects in materials and workmanship for a period of 2 years from the date of purchase.

### What is Not Covered

This warranty is not transferable and does not cover (i) cosmetic damage, (ii) damage due to acts of God, accident, misuse, abuse, negligence, commercial use, or due to improper use, installation, operation or maintenance, (iii) modification of or to any part of the Product, (iv) attempted service by anyone other than a Horizon Hobby authorized service center, (v) Product not purchased from an authorized Horizon dealer, or (vi) Product not compliant with applicable technical regulations or (vii) use that violates any applicable laws, rules, or regulations.

OTHER THAN THE EXPRESS WARRANTY ABOVE, HORIZON MAKES NO OTHER WARRANTY OR REPRESENTATION, AND HEREBY DISCLAIMS ANY AND ALL IMPLIED WARRANTIES, INCLUDING, WITHOUT LIMITATION, THE IMPLIED WARRANTIES OF NON-INFRINGEMENT, MERCHANTABILITY AND FITNESS FOR A PARTICULAR PURPOSE. THE PURCHASER ACKNOWLEDGES THAT THEY ALONE HAVE DETERMINED THAT THE PRODUCT WILL SUITABLY MEET THE REQUIREMENTS OF THE PURCHASER'S INTENDED USE.

### Purchaser's Remedy

Horizon's sole obligation and purchaser's sole and exclusive remedy shall be that Horizon will, at its option, either (i) service, or (ii) replace, any Product determined by Horizon to be defective. Horizon reserves the right to inspect any and all Product(s) involved in a warranty claim. Service or replacement decisions are at the sole discretion of Horizon. Proof of purchase is required for all warranty claims. SERVICE OR REPLACEMENT AS PROVIDED UNDER THIS WARRANTY IS THE PURCHASER'S SOLE AND EXCLUSIVE REMEDY.

### Limitation of Liability

HORIZON SHALL NOT BE LIABLE FOR SPECIAL, INDIRECT, INCIDENTAL OR CONSEQUENTIAL DAMAGES, LOSS OF PROFITS OR PRODUCTION OR COMMERCIAL LOSS IN ANY WAY, REGARDLESS OF WHETHER SUCH CLAIM IS BASED IN CONTRACT, WARRANTY, TORT, NEGLIGENCE, STRICT LIABILITY OR ANY OTHER THEORY OF LIABILITY, EVEN IF HORIZON HAS BEEN ADVISED OF THE POSSIBILITY OF SUCH DAMAGES. Further, in no event shall the liability of Horizon exceed the individual price of the Product on which liability is asserted. As Horizon has no control over use, setup, final assembly, modification or misuse, no liability shall be assumed nor accepted for any resulting damage or injury. By the act of use, setup or assembly, the user accepts all resulting liability. If you as the purchaser or user are not prepared to accept the liability associated with the use of the Product, purchaser is advised to return the Product immediately in new and unused condition to the place of purchase.

### Law

These terms are governed by Illinois law (without regard to conflict of law principals). This warranty gives you specific legal rights, and you may also have other rights which vary from state to state. Horizon reserves the right to change or modify this warranty at any time without notice.

## WARRANTY SERVICES

### Questions, Assistance, and Services

Your local hobby store and/or place of purchase cannot provide warranty support or service. Once assembly, setup or use of the Product has been started, you must contact your local distributor or Horizon directly. This will enable

Horizon to better answer your questions and service you in the event that you may need any assistance. For questions or assistance, please visit our website at [www.horizonhobby.com](http://www.horizonhobby.com), submit a Product Support Inquiry, or call the toll free telephone number referenced in the Warranty and Service Contact Information section to speak with a Product Support representative.

### Inspection or Services

If this Product needs to be inspected or serviced and is compliant in the country you live and use the Product in, please use the Horizon Online Service Request submission process found on our website or call Horizon to obtain a Return Merchandise Authorization (RMA) number. Pack the Product securely using a shipping carton. Please note that original boxes may be included, but are not designed to withstand the rigors of shipping without additional protection. Ship via a carrier that provides tracking and insurance for lost or damaged parcels, as Horizon is not responsible for merchandise until it arrives and is accepted at our facility. An Online Service Request is available at [http://www.horizonhobby.com/content/service-center\\_render-service-center](http://www.horizonhobby.com/content/service-center_render-service-center). If you do not have internet access, please contact Horizon Product Support to obtain a RMA number along with instructions for submitting your product for service. When calling Horizon, you will be asked to provide your complete name, street address, email address and phone number where you can be reached during business hours. When sending product into Horizon, please include your RMA number, a list of the included items, and a brief summary of the problem. A copy of your original sales receipt must be included for warranty consideration. Be sure your name, address, and RMA number are clearly written on the outside of the shipping carton.

**NOTICE:** Do not ship Li-Po batteries to Horizon. If you have any issue with a Li-Po battery, please contact the appropriate Horizon Product Support office.

### Warranty Requirements

For Warranty consideration, you must include your original sales receipt verifying the proof-of-purchase date. Provided warranty conditions have been met, your Product will be serviced or replaced free of charge. Service or replacement decisions are at the sole discretion of Horizon.

### Non-Warranty Service

Should your service not be covered by warranty, service will be completed and payment will be required without notification or estimate of the expense unless the expense exceeds 50% of the retail purchase cost. By submitting the item for service you are agreeing to payment of the service without notification. Service estimates are available upon request. You must include this request with your item submitted for service. Non-warranty service estimates will be billed a minimum of 1/2 hour of labor. In addition you will be billed for return freight. Horizon accepts money orders and cashier's checks, as well as Visa, MasterCard, American Express, and Discover cards. By submitting any item to Horizon for service, you are agreeing to Horizon's Terms and Conditions found on our website [http://www.horizonhobby.com/content/service-center\\_render-service-center](http://www.horizonhobby.com/content/service-center_render-service-center).

**ATTENTION:** Horizon service is limited to Product compliant in the country of use and ownership. If received, a non-compliant Product will not be serviced. Further, the sender will be responsible for arranging return shipment of the un-serviced Product, through a carrier of the sender's choice and at the sender's expense. Horizon will hold non-compliant Product for a period of 60 days from notification, after which it will be discarded.



## WARRANTY AND SERVICE CONTACT INFORMATION

COUNTRY OF PURCHASE	HORIZON HOBBY	CONTACT INFORMATION	ADDRESS
United States of America	Horizon Service Center (Repairs and Repair Requests)	servicecenter.horizonhobby.com/RequestForm/	2904 Research Rd. Champaign, Illinois 61822 USA
	Horizon Product Support (Product Technical Assistance)	productsupport@horizonhobby.com 877-504-0233	
	Sales	websales@horizonhobby.com 800-338-4639	
European Union	Horizon Technischer Service	service@horizonhobby.de +49 (0) 4121 2655 100	Hanskampring 9 D 22885 Barsbüttel, Germany
	Sales: Horizon Hobby GmbH		

## FCC INFORMATION

**Contains FCC ID: BRWKATY1T**  
**FCC ID: BRWSPMSR6200A**

This equipment complies with FCC and IC radiation exposure limits set forth for an uncontrolled environment. This equipment should be installed and operated with minimum distance 20cm between the radiator and/or antenna and your body (excluding fingers, hands, wrists, ankles and feet). This transmitter must not be co-located or operating in conjunction with any other antenna or transmitter.

**SUPPLIER'S DECLARATION OF CONFORMITY**  
**LOSI 5IVE-TE 3.0 1:5 Electric 4WD Desert Truck (LOS05022)**

**FC** This device complies with part 15 of the FCC Rules. Operation is subject to the following two conditions:  
(1) This device may not cause harmful interference, and (2) this device must accept any interference received, including interference that may cause undesired operation.

**CAUTION:** Changes or modifications not expressly approved by the party responsible for compliance could void the user's authority to operate the equipment.

**NOTE:** This equipment has been tested and found to comply with the limits for a Class B digital device,

pursuant to part 15 of the FCC Rules. These limits are designed to provide reasonable protection against harmful interference in a residential installation. This equipment generates, uses and can radiate radio frequency energy and, if not installed and used in accordance with the instructions, may cause harmful interference to radio communications. However, there is no guarantee that interference will not occur in a particular installation. If this equipment does cause harmful interference to radio or television reception, which can be determined by turning the equipment off and on, the user is encouraged to try to correct the interference by one or more of the following measures:

- Reorient or relocate the receiving antenna.
- Increase the separation between the equipment and receiver.
- Connect the equipment into an outlet on a circuit different from that to which the receiver is connected.
- Consult the dealer or an experienced radio/TV technician for help.

Horizon Hobby, LLC  
2904 Research Road Champaign, IL 61822  
Email: compliance@horizonhobby.com  
Web: HorizonHobby.com

## IC INFORMATION

**CAN ICES-3 (B)/NMB-3(B)**  
**CONTAINS IC: 6157A-KATY1T**  
**IC: 6157A-SPMSR6200A**

This device contains license-exempt transmitter(s)/receivers(s) that comply with Innovation, Science, and Economic Development Canada's license-exempt RSS(s).

Operation is subject to the following 2 conditions:

1. This device may not cause interference.
2. This device must accept any interference, including interference that may cause undesired operation of the device.

## COMPLIANCE INFORMATION FOR THE EUROPEAN UNION

**EU COMPLIANCE STATEMENT:**

**LOSI 5IVE-TE 3.0 1:5 Electric 4WD Desert Truck (LOS05022);** Hereby, Horizon Hobby, LLC declares that the device is in compliance with the following: Radio Equipment Directive (RED) 2014/53/EU; RoHS 2 Directive 2011/65/EU; RoHS 3 Directive - Amending 2011/65/EU Annex II 2015/863.

The full text of the EU declaration of conformity is available at the following internet address: <https://www.horizonhobby.com/content/support-render-compliance>.

**NOTE:** This product contains batteries that are covered under the 2006/66/EC European Directive, which cannot be disposed of with normal household waste. Please follow local regulations.

**Wireless Frequency Range and Wireless Output Power:****Transmitter:**

2402 - 2478 MHz  
17.7dBm

**Receiver:**

2404-2476MHz  
5.58dBm

**EU Manufacturer of Record:**

Horizon Hobby, LLC  
2904 Research Road  
Champaign, IL 61822 USA

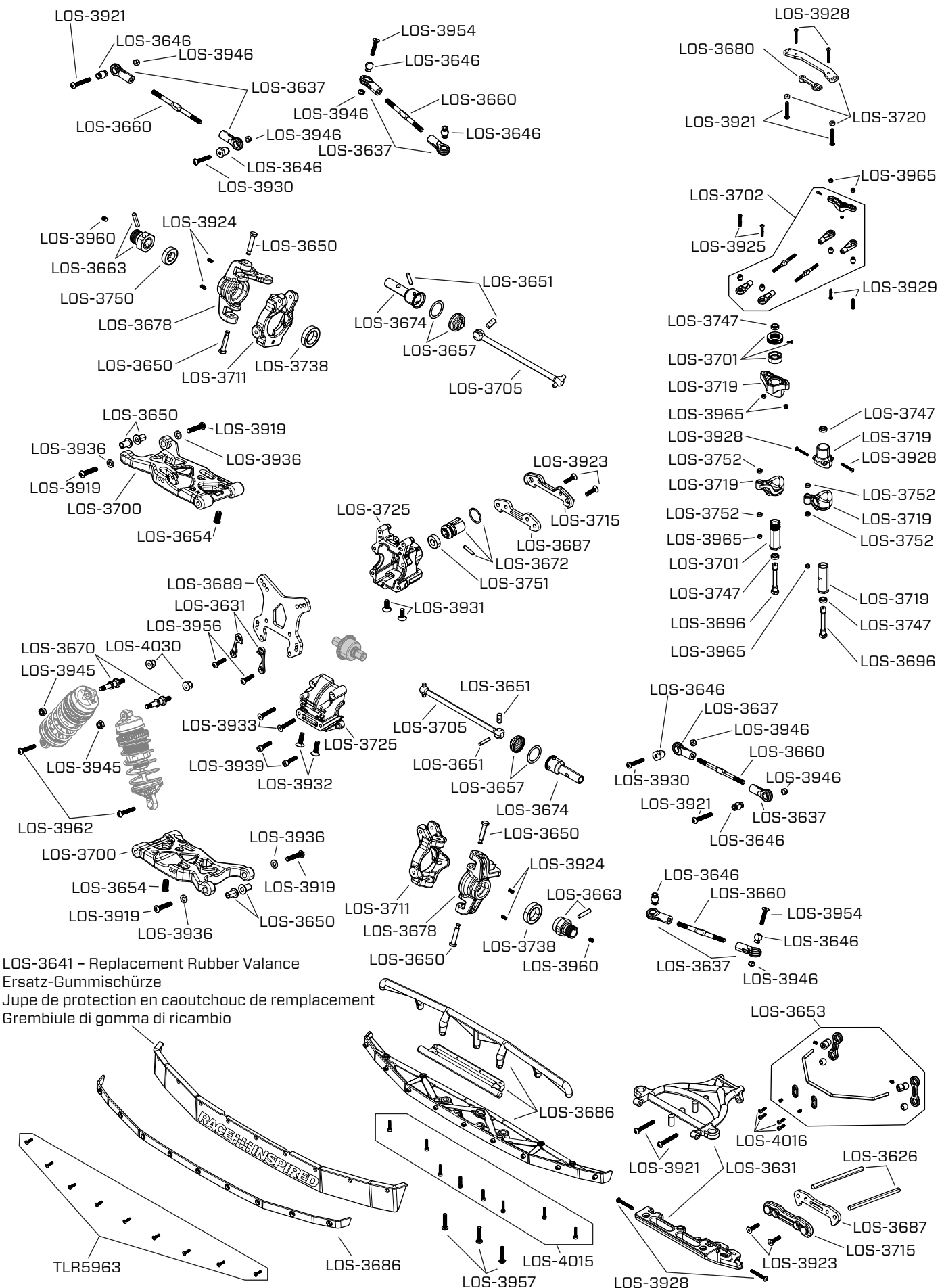
**EU Importer of Record:**

Horizon Hobby, GmbH  
Hanskampring 9  
22885 Barsbüttel Germany

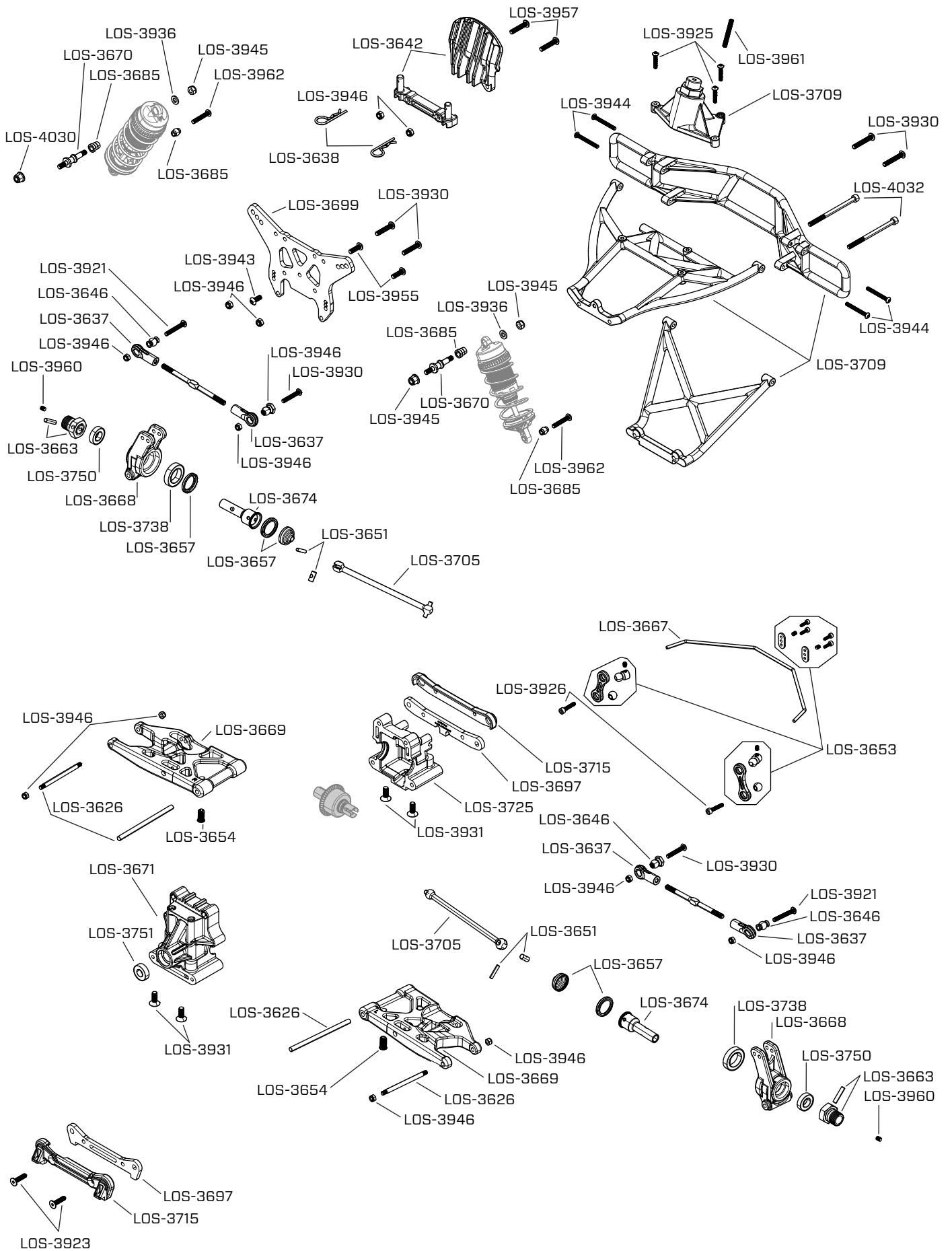
**WEEE NOTICE:**

This appliance is labeled in accordance with European Directive 2012/19/EU concerning waste of electrical and electronic equipment (WEEE). This label indicates that this product should not be disposed of with household waste. It should be deposited at an appropriate facility to enable recovery and recycling.

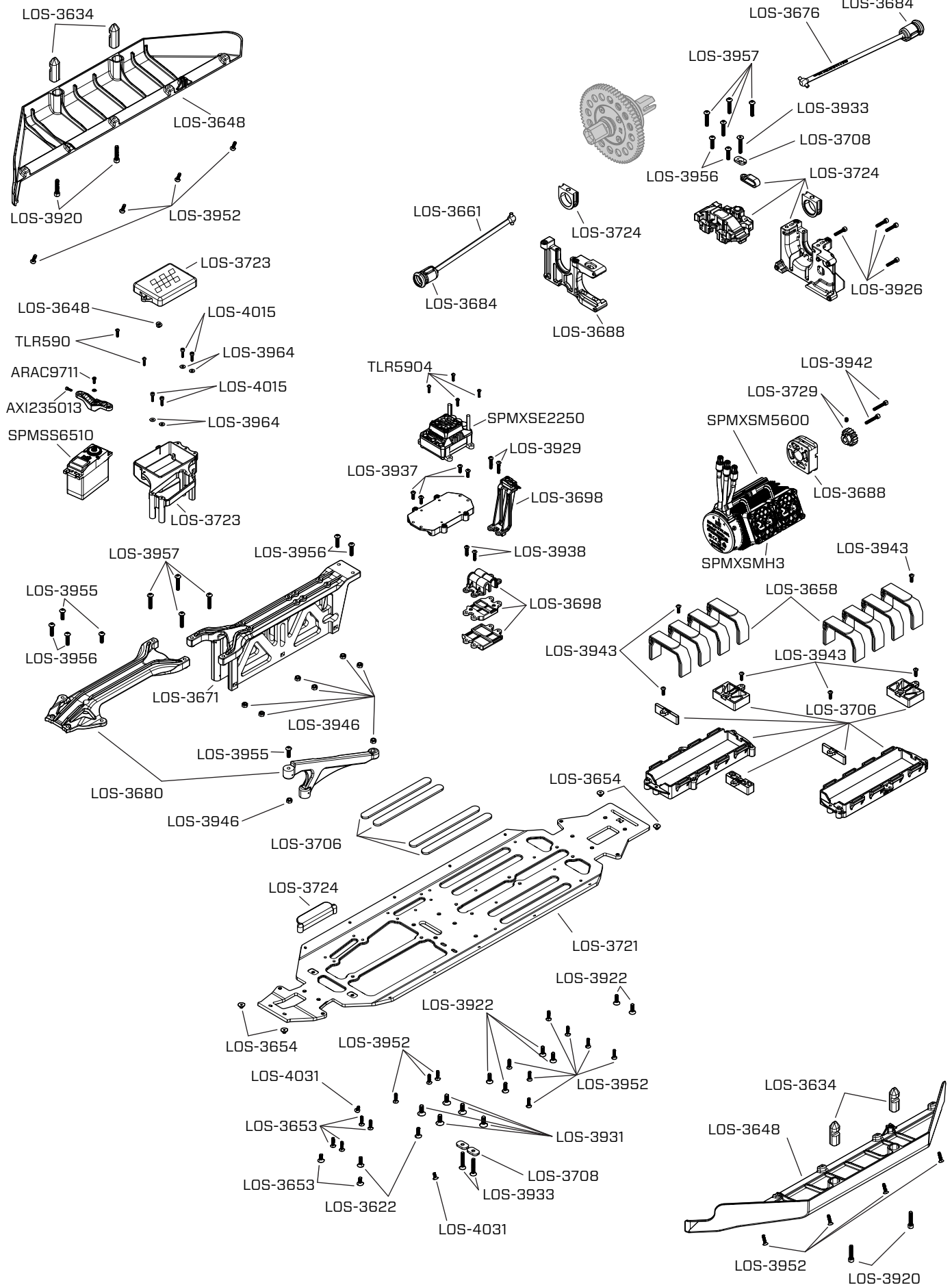
**FRONT AXLE | VORDERACHSE | ESSIEU AVANT | ASSALE ANTERIORE**



REAR AXLE | HINTERACHSE | ESSIEU ARRIÈRE | ASSALE POSTERIORE

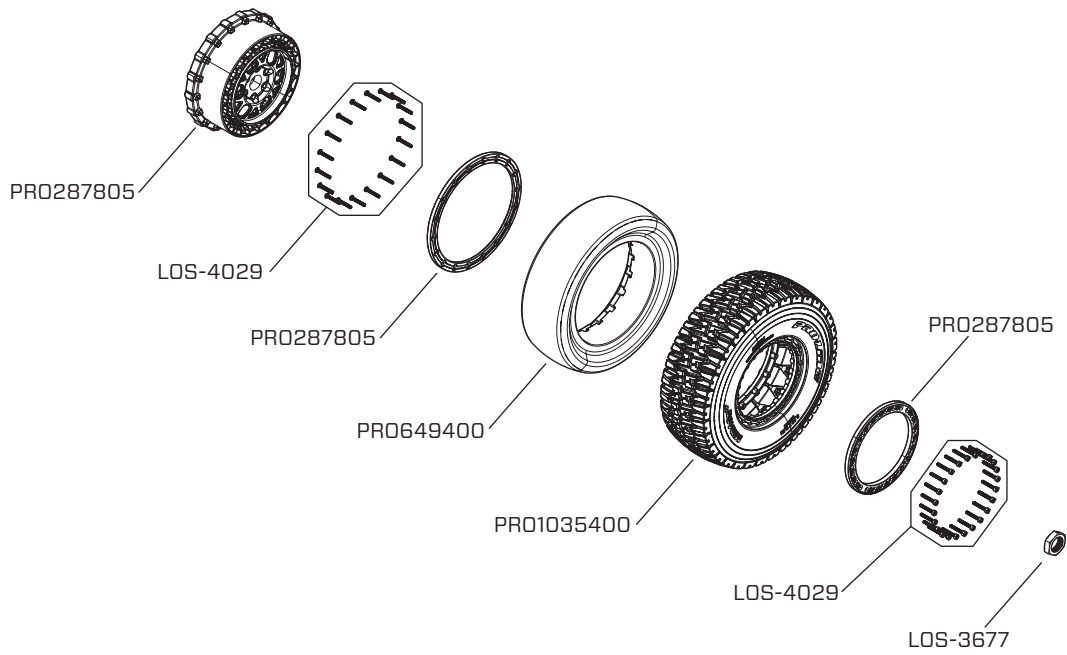
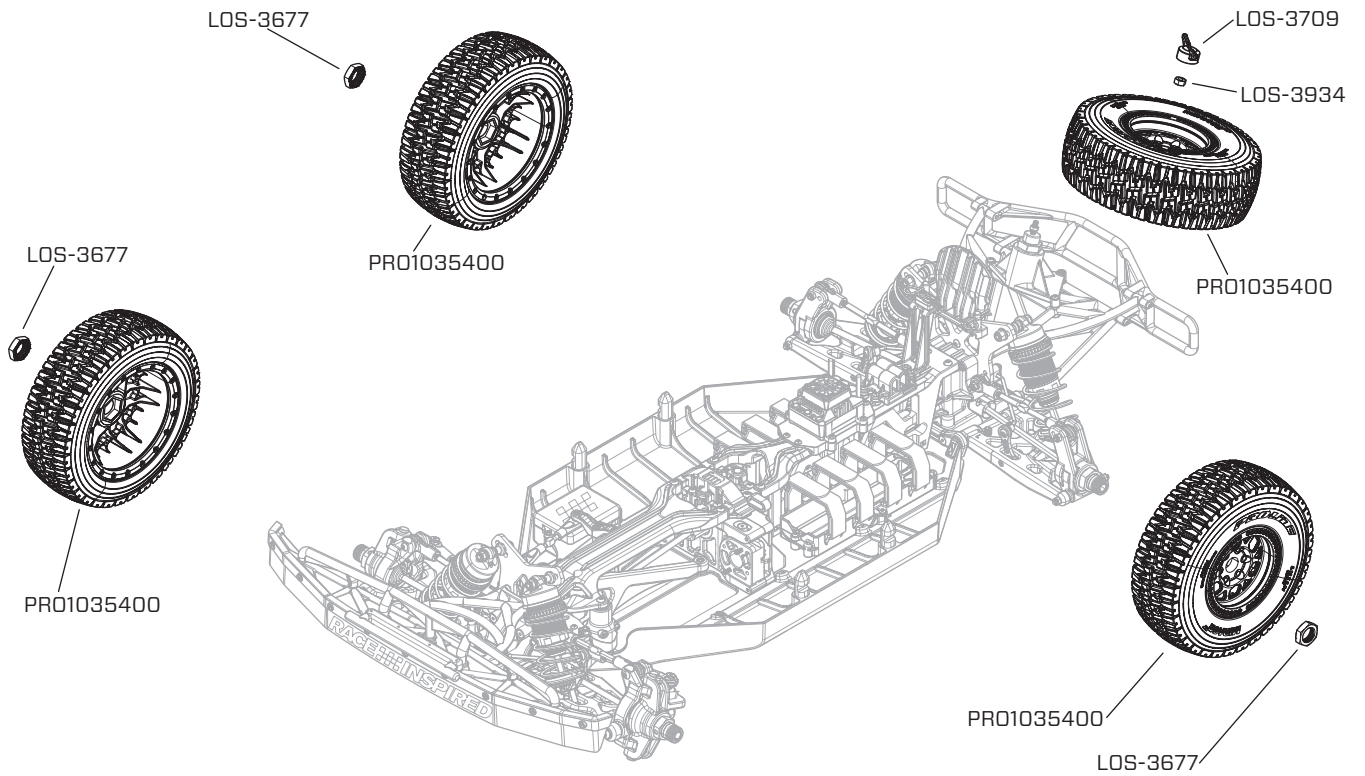


**CHASSIS | CHASSIS | CHÂSSIS | TELAIO**

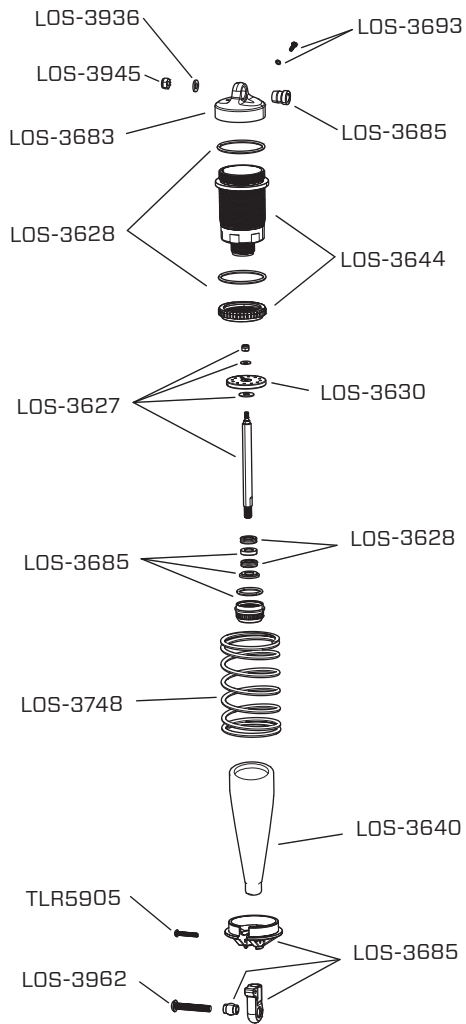




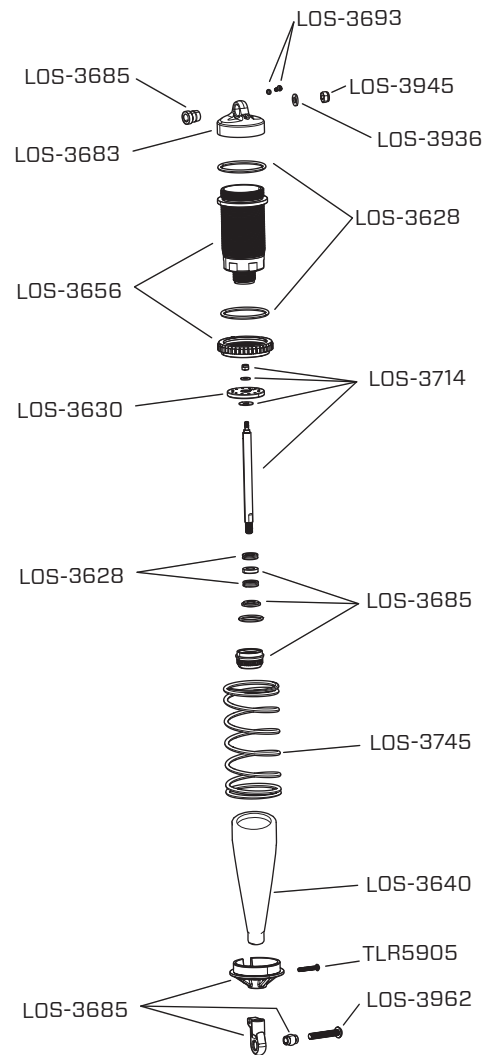
WHEELS AND TIRES | RÄDER UND REIFEN | ROUES ET PNEUX | CERCHI E RUOTE



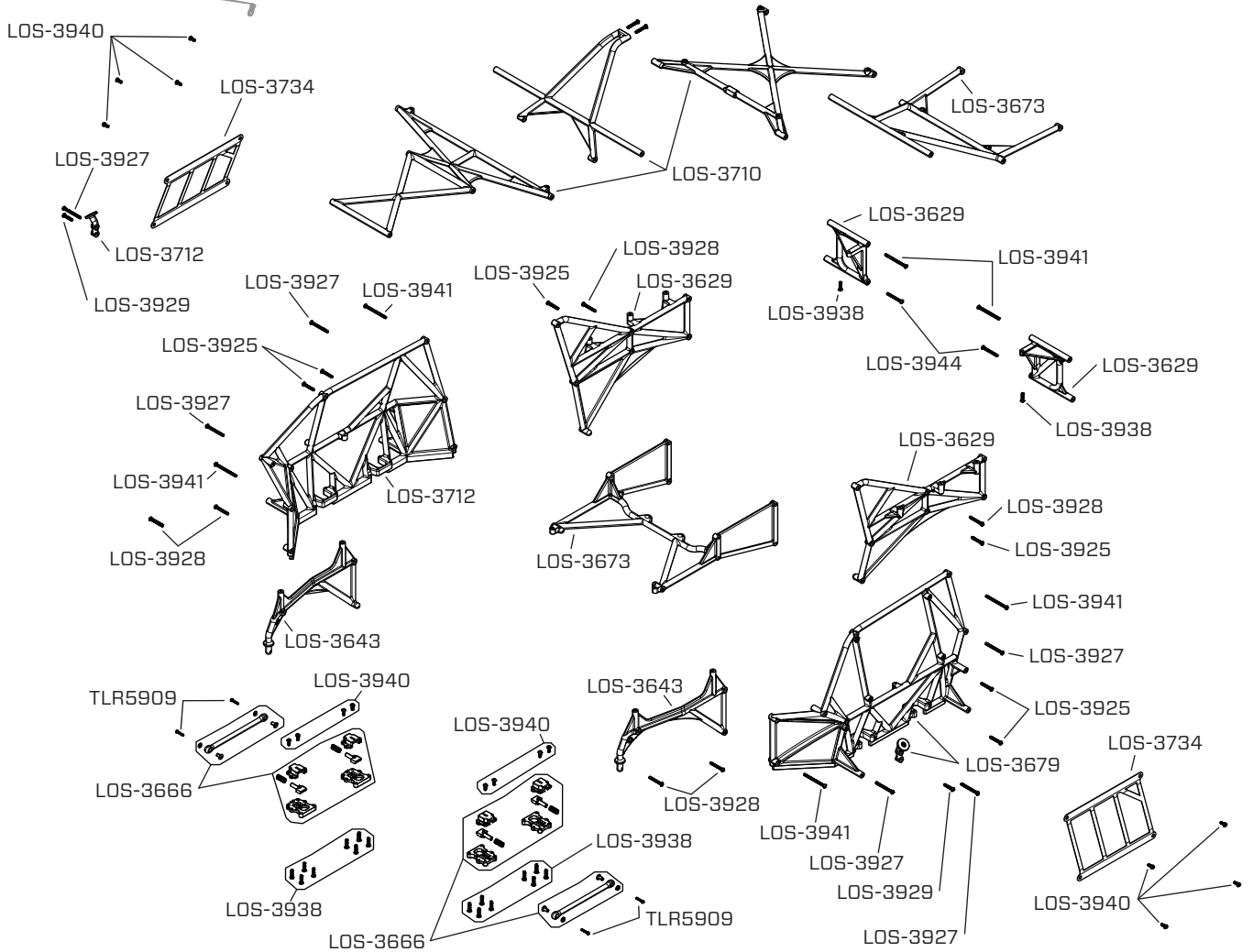
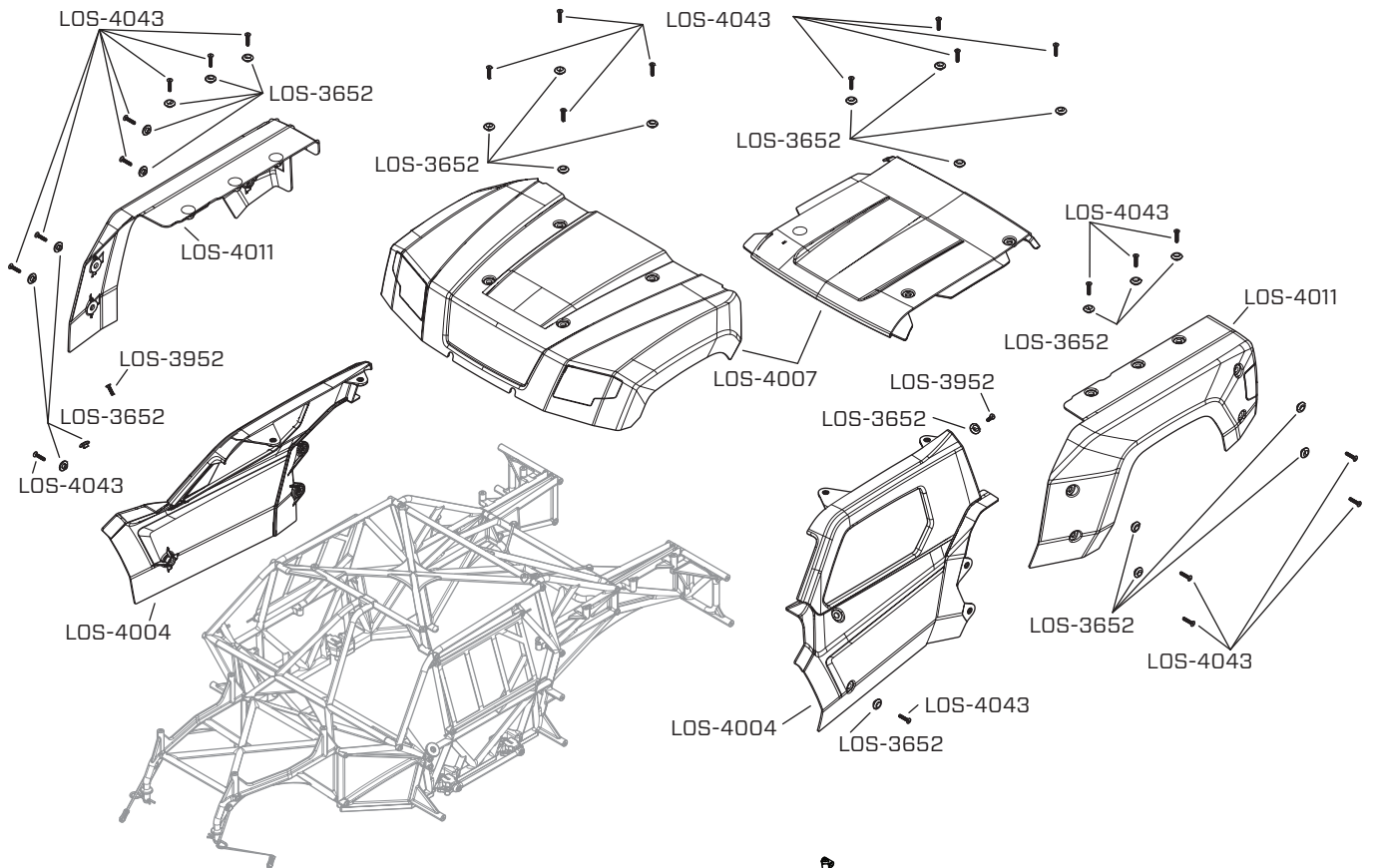
**FRONT  
VORNE  
AVANT  
ANTERIORE**



**REAR  
HINTEN  
ARRIÈRE  
POSTERIORE**



**BODY AND CAGE | KAROSSERIE UND KÄFIG | CARROSSERIE ET CAGE | CARROZZERIA E GABBIA**



**REPLACEMENT PARTS | ERSATZTEILE | PIÈCES DE RECHANGE | PARTI DI RICAMBIO**

#	DESCRIPTION	BESCHREIBUNG	DESCRIPTION	DESCRIZIONE
LOS-3626	Hinge Pin Set (6): ALL 5IVE	Scharnierbolzen Satz (6): ALLE 5IVE	Jeu d'axes de charnière (6) : TOUS LES 5IVE	Set perni cerniere (6): TUTTI I 5IVE
LOS-3627	Nutted Shock Shaft, Front (2): 5IVE-T 3.0	Kolbenstange mit Mutter, Vorne (2) 5IVE-T 3.0	Tige d'amortisseur écrouée (avant) (2) : 5IVE-T 3.0	Aste ammortizzatori con dado, anteriori (2): 5T 3.0
LOS-3628	Shock Seal Rebuild Kit (4): ALL 5IVE	Stoßdämpferdichtungs-Reparaturset (4): ALLE 5IVE	Kit de réfection (ou réparation) des joints d'amortisseur (4) TOUS LES 5IVE	Kit ricostruzione guarnizioni ammortizzatori (4): TUTTI I 5IVE
LOS-3629	Fender Mounts and Cage, Rear, L/R: 5IVE-T 3.0	Schutzblechhalterungen und Käfig, hinten, L/R: 5IVE-T 3.0	Supports de garde-boue et cage, arrière, G/D : 5IVE-T 3.0	Supporti parafango e gabbia, posteriore, SX/DX: 5T 3.0
LOS-3630	32mm Taper Shock Piston 2.1 x 6 (4): 5IVE-T 3.0	32mm Stoßdämpferkolben konisch 2,1 x 6 (4): 5IVE-T 3.0	Piston d'amortisseur conique de 32 mm 2,1 x 6 (4) : 5IVE-T 3.0	Pistone ammortizzatore conico da 32 mm 2,1 x 6 (4): 5T 3.0
LOS-3631	Front Skid Plate and Brace: 5IVE-3.0	Frontgleitplatte und Strebe: 5IVE-3.0	Plaque de protection et renfort avant 5IVE-T -3.0	Piastra di protezione anteriore e rinforzo: 5IVE-3.0
LOS-3634	Latch Post, Side Guard: 5IVE-T 3.0	Verriegelungsbolzen, Seitenschutz: 5IVE-T 3.0	Support de verrouillage), protection latérale : 5IVE-T 3.0	Fermo, protezione laterale: 5T 3.0
LOS-3635	MotorMountInsert 16 & 18 for 67t spur: 5IVE-TE	Motorhalterungseinsatz 16 & 18 für 67t Stirnrad: 5IVE-TE	MotorMountInsert 16 & 18 pour éperon 67t : 5IVE-TE	Inserto supporto motore 16 & 18 per pignone 67T: 5IVE-TE
LOS-3637	Rod End Set (12): ALL 5IVE	Stangenkopfsatz (12): ALLE 5IVE	Jeu d'embouts de tiges (12) : TOUS LES 5IVE	Set teste a snodo (12): TUTTI I 5IVE
LOS-3638	Body Clips and Teather: 5IVE-T 3.0	Gehäuseklemme und Klammer: 5IVE-T 3.0	Goupilles de carrosserie et dragonne (12) : 5IVE-T 3.0	Clip carrozzeria e corda di sicurezza: 5T 3.0
LOS-3639	32mm Taper Shock Piston 2.2 x 6 (4): 5IVE-T 3.0	32mm Stoßdämpferkolben konisch 2,2 x 6 (4): 5IVE-T 3.0	Piston d'amortisseur conique de 32 mm 2,2 x 6 (4) : 5IVE-T 3.0	Pistone ammortizzatore conico da 32 mm 2,2 x 6 (4): 5T 3.0
LOS-3640	Shock Boots (4): All 5IVE	Stoßdämpfermanschetten (4): Alle 5IVE	Soufflets d'amortisseur (4) : Tous les 5IVE	Parapolvere ammortizzatori (4): Tutti i 5IVE
LOS-3641	Lower Valance, Front Bumper, Rubber: 5IVE-3.0	Untere Blende, Frontstoßstange, Gummi: 5IVE-3.0	Bas de caisse, pare-chocs avant, caoutchouc : 5IVE-T -3.0	Valance inferiore, paraurti anteriore, gomma: 5IVE-3.0
LOS-3642	Spare Tire Heel and Rear Cage Mount: 5IVE-T 3.0	Ersatzreifenhalterung und hintere Käfighalterung: 5IVE-T 3.0	Roue de secours talon et arrière support de cage : 5IVE-T 3.0	Supporti per ruota di scorta e gabbia posteriore: 5T 3.0
LOS-3643	Front Cage Support L/R: 5IVE-T 3.0	Vorderer Käfigträger L/R: 5IVE-T 3.0	Support de cage avant G/D : 5IVE-T 3.0	Supporto gabbia anteriore SX/DX: 5T 3.0
LOS-3644	Shock Body & Adjuster, Front, 32mm Bore: 5IVE-T 3.0	Dämpfergehäuse und Einsteller, Vorne, 32 mm Bohrung: 5IVE-T 3.0	Corps d'amortisseur et réglage, avant, alésage 32 mm : 5IVE-T 3.0	Corpo ammortizzatore e regolatore, anteriore, foro 32 mm: 5T 3.0
LOS-3645	Differential Housing Set (1): ALL 5IVE	Differentialgehäusesatz (1): ALLE 5IVE	Ensemble de boîtier de différentiel (1) : TOUS LES 5IVE	Set alloggiamento differenziale (1): TUTTI I 5IVE
LOS-3646	Camber&Steering PivotBall Set, Steel (12) ALL 5IVE	Sturz- und Lenkkugelsatz, Stahl (12) ALL 5IVE	Jeu de rotules de carrossage et de direction, Acier (12) POUR TOUS les 5IVE	Set di pivot ball per camber e sterzo, acciaio (12) TUTTI I 5IVE
LOS-3647	F/R Differential Pinion Gear, 12T: 5IVE 3.0	F/R Differentialzahnradgetriebe, 12T: 5IVE 3.0	Engrenage différentiel à pignons avant/arrière, 12T : 5IVE-T 3.0	Ingranaggio pignone differenziale A/P, 12T: 5IVE 3.0
LOS-3648	Side Guard Set (2): 5IVE-3.0	Seitenschutzsatz (2): 5IVE-3.0	Jeu de protections latérales (2) 5IVE-T -3.0	Set protezioni laterali (2): 5IVE-3.0
LOS-3650	Front King Pins & Arm Bushings, Steel: ALL 5IVE	Vordere Achsschenkelbolzen und Querlenkerbuchsen, Stahl: ALLE 5IVE	Axes de pivot avant et bagues de bras de suspension, acier TOUS LES 5IVE	Perni di fuso anteriori e boccole per bracci, acciaio: TUTTI I 5IVE
LOS-3651	CV Joints & Pins (2): ALL 5IVE	CV-Gelenke und Bolzen (2): ALLE 5IVE	Joints et goupilles CV (2) : TOUS LES 5IVE	Giunti e perni CV (2): TUTTI I 5IVE



#	DESCRIPTION	BESCHREIBUNG	DESCRIPTION	DESCRIZIONE
LOS-3652	Body Button, Outer (26): 5IVE-T 3.0	Karosserieknopf, Außen (26) 5IVE-T 3.0	Boutons de carrosserie (extérieurs) (26) : 5IVE-T 3.0	Bottoni per carrozzeria, esterni (26): 5T 3.0
LOS-3653	Sway Bar Set and Hardware: ALL 5IVE	Schwingen-Satz und Beschlage: ALLE 5IVE	Jeu de barres stabilisatrices et quincaillerie : TOUS LES 5IVE	Set barra antirollio e bulloneria: TUTTI I 5IVE
LOS-3654	Droop Screws & Chassis Stops (4): 5IVE-T 3.0	Federweg-Begrenzungsschrauben und Fahrgestellanschlage (4): 5IVE-T 3.0	Vis de dattement et butees de chassis (4) : 5IVE-T 3.0	Viti di droop e fermi del telaio (4): 5T 3.0
LOS-3655	Diff Ring Gear, Front, 43/12T: 5IVE-3.0	Differentialzahnkranz, vorne, 43/12Z: 5IVE-3.0	Couronne de differentiel, avant, 43/12T : 5IVE-T -3.0	Ingranaggio a corona differenziale, anteriore, 43/12T: 5IVE-3.0
LOS-3656	Shock Body & Adjuster, Rear, 32mm Bore: 5IVE-T 3.0	Dampfergehause und Einsteller, hinten, 32 mm Bohrung: 5IVE-T 3.0	Corps d'amortisseur et reglage, arriere, alesage 32 mm : 5IVE-T 3.0	Corpo ammortizzatore e regolatore, posteriore, foro 32 mm: 5T 3.0
LOS-3657	Axle Boot Set: 5IVE 3.0	Achsmanschettensatz: 5IVE 3.0	Ensemble du soufflet d'essieu : 5IVE-T 3.0	Set parapolvere assali: 5IVE 3.0
LOS-3658	Battery Straps, Long and Short: 5IVE-TE	Akku-Klemmen, lang und kurz: 5IVE-TE	Sangles de batterie, longues et courtes : 5IVE-TE	Cinghie per batteria, lunghe e corte: 5IVE-TE
LOS-3659	Internal Differential Gears and Shims (6): ALL 5IVE	Interne Differentialzahnrader und Unterlegscheiben (6): ALLE 5IVE	Engrenages differentiels internes et cales (6) : TOUS LES 5IVE	Ingranaggi differenziali interni e spessori (6): TUTTI I 5IVE
LOS-3660	Turnbuckle Set (6): ALL 5IVE	Spannschraubensatz (6): ALLE 5IVE	Jeu de tringles  pas inverse (6) : TOUS LES 5IVE	Set tenditore (6): TUTTI I 5IVE
LOS-3661	Center Dogbone 188.0mm, Front: 5IVE-TE	Mittiger Dogbone 188,0 mm, vorne: 5IVE-TE	Os de chien central 188,0 mm, avant : 5IVE-TE	Dogbone centrale 188,0 mm, anteriore: 5IVE-TE
LOS-3662	Body Set, Complete, White: 5IVE-T 3.0	Gehausesatz, komplett, wei: 5IVE-T 3.0	Ensemble de carrosserie, complet, blanc : 5IVE-T 3.0	Set carrozzeria, Completo, Bianco: 5T 3.0
LOS-3663	F/R Wheel Hex and Pin (2): ALL 5IVE	F/R Rad Sechskante und Bolzen (2): ALLE 5IVE	Moyeu hexagonal de roue AV/AR avec goupille (2) : TOUS LES 5IVE	Esagoni ruote e perni A/P (2): TUTTI I 5IVE
LOS-3666	Side Cage Latch Set: 5IVE-T 3.0	Seitenkufig-Verriegelungssatz: 5IVE-T 3.0	Kit de verrouillage lateral de la cage : 5IVE-T 3.0	Set di chiusura per gabbia laterale: 5T 3.0
LOS-3667	Sway Bar Tuning Set: ALL 5IVE	Schwingenverbindungs-Satz: ALLE 5IVE	Ensemble tringlerie de barre stabilisatrice : TOUS LES 5IVE	Kit messa a punto barra antirollio: TUTTI I 5IVE
LOS-3668	Hub Carrer Set, Rear (2): All 5IVE	Nabentragersatz, hinten (2): Alle 5IVE	Jeu de moyeux, arriere (2) : Tous les 5IVE	Set supporto mozzo, posteriore (2): Tutti i 5IVE
LOS-3669	Suspension Arm Set, Rear (2): 5IVE-3.0	Querlenker-Satz, hinten (2): 5IVE-3.0	Jeu de bras de suspension, arriere (2) : 5IVE-T -3.0	Set bracci sospensione, posteriori (2): 5IVE-3.0
LOS-3670	Shock Mount Set (4): 5IVE-T 3.0	Stodampfer-Halterungssatz (4): 5IVE-T 3.0	Ensemble support d'amortisseur (4) : 5IVE-T 3.0	Kit montaggio ammortizzatori (4): 5T 3.0
LOS-3671	Chassis Brace Rear, Electric: 5IVE-TE	Karosseriestrebe hinten, elektrisch: 5IVE-TE	Renfort de chassis arriere, lectrique : 5IVE-TE	Barra di rinforzo posteriore, veicoli elettrici: 5IVE-TE
LOS-3672	F/R Center Dogbone Drive Coupler (2): 5IVE 3.0	Front/Heck Antriebskupplung mittlerer Dogbone (2): 5IVE 3.0	Coupleur de transmission central (os de chien) avant/arriere (2) : 5IVE-T 3.0	Accoppiamento di trasmissione Dogbone centrale A/P (2): 5IVE 3.0
LOS-3673	Crossbar Cage, Rear: 5IVE-T 3.0	Querstangen-Kufig, hinten: 5IVE-T 3.0	Cage  barre transversale, arriere : 5IVE-T 3.0	Gabbia a barra trasversale, posteriore: 5T 3.0
LOS-3674	F/R Booted Stub Axle & Pins (1): ALL 5IVE	F/R Achsstumpf mit Staubschutz und Stifte (1): ALLE 5IVE	Axe de fusee (court) soufflete avant/arriere et goupilles (1) : TOUS LES 5IVE	Assale corto A/P con parapolvere e perni (1): TUTTI I 5IVE

#	DESCRIPTION	BESCHREIBUNG	DESCRIPTION	DESCRIZIONE
LOS-3675	32mm Taper Shock Piston 2.0 x 6 (4): 5IVE-T 3.0	32mm Stoßdämpferkolben konisch 2,0 x 6 (4): 5IVE-T 3.0	Piston d'amortisseur conique de 32 mm 2,0 x 6 (4) : 5IVE-T 3.0	Pistone ammortizzatore conico da 32 mm 2,0 x 6 (4): 5T 3.0
LOS-3676	Center Dogbone 237.0mm, Rear: 5IVE-TE	Mittiger Dogbone 237,0 mm, Hinten: 5IVE-TE	Os de chien central de 237,0 mm, arrière 5IVE-TE	Dogbone centrale 237,0 mm, Posteriore: 5IVE-TE
LOS-3677	Wheel Nut, Black (4): ALL 5IVE	Radmutter, schwarz (4): ALLE 5IVE	Écrou de roue, Noir (4) : TOUS LES 5IVE	Dadi cerchi, Nero (4): TUTTI I 5IVE
LOS-3678	Spindle Set, Front (2): All 5IVE	Spindelsatz, Vorne (2): Alle 5IVE	Jeu de fusées avant (2) : Tous les 5IVE	Set fuselli, anteriori (2): Tutti i 5IVE
LOS-3679	Left Side Cage, Door: 5IVE-T 3.0	Linke Seite Käfig, Tür: 5IVE-T 3.0	Cage latérale gauche, porte : 5IVE-T 3.0	Gabbia laterale sinistra, porta: 5T 3.0
LOS-3680	Chassis Brace Set, Front, Electric: 5IVE-TE	Karosseriestreben-Satz, vorne, elektrisch: 5IVE-TE	Jeu de renforts de châssis, avant, électrique : 5IVE-TE	Set di rinforzi per telaio, anteriore, veicolo elettrico: 5IVE-TE
LOS-3681	Spur Gear, Center Diff, 67T, MOD1.5: 5IVE-3.0	Stirnrad, Mittl Diff, 67 Zähne, MOD1.5: 5IVE-3.0	Couronne dentée de différentiel central, 67 dents, Module 1.5 : 5IVE-T -3.0	Corona dentata, diff. centrale, 67T, MOD1.5: 5IVE-3.0
LOS-3682	F/R Differential Outdrive (2): ALL 5IVE	Front/Heck Differentialantrieb (2): ALLE 5IVE	Coupelles de sortie de différentiel avant/arrière (2) : TOUS LES 5IVE	Outdrive differenziale A/P (2): TUTTI I 5IVE
LOS-3683	Bleeder Shock Cap, 32mm Bore (2): 5IVE-T 3.0	Stoßdämpferkappe mit Entlüftung, 32 mm Bohrung (2) 5IVE-T 3.0	Bouchon d'amortisseur avec purgeur, alésage de 32 mm (2) : 5IVE-T 3.0	Tappi di sfiato per ammortizzatori, foro 32 mm (2): 5T 3.0
LOS-3685	Shock Plastics and Balls (4): All 5IVE	Stoßdämpfer Kunststoff und Kugeln (4): Alle 5IVE	Pièces en plastiques et rotules d'amortisseur (4) : Tous les 5IVE	Plastiche e sfere ammortizzatori (4): Tutti i 5IVE
LOS-3686	Front Bumper and Valence: 5IVE-3.0	Vordere Stoßstange und Schweller: 5IVE-3.0	Pare-chocs avant et valence : 5IVE-T -3.0	Paraurti anteriore e Valence: 5IVE-3.0
LOS-3687	Hinge Pin Brace Set, Front, Steel: ALL 5IVE	Scharnierstiftklammer Satz, Vorne, Stahl: ALLE 5IVE	Jeu de supports/renforts d'axes de charnière avant, acier : TOUS LES 5IVE	Set staffe per perni di cerniera, anteriore, acciaio: TUTTI I 5IVE
LOS-3688	Motor Mount and Mounting Block: 5IVE-TE	Motorhalterung und Befestigungsblock: 5IVE-TE	Montage du moteur et bloc de montage : 5IVE-TE	Supporto motore e blocco di montaggio: 5IVE-TE
LOS-3689	Shock Tower, Front: ALL 5IVE	Stoßdämpferbrücke, vorn: ALLE 5IVE	Tour d'amortisseur, avant : TOUS LES 5IVE	Torre ammortizzatore, Anteriore: TUTTI I 5IVE
LOS-3690	Motor Plate, Electric: 5IVE-TE	Motorplatte, Elektrisch: 5IVE-TE	Plaque moteur, électrique : 5IVE-TE	Piastra motore, veicoli elettrici: 5IVE-TE
LOS-3693	Bleeder Shock Cap Screws & Washers: ALL 5IVE	Schrauben und Unterlegscheiben für Stoßdämpfer-Entlüftungskappen: ALLE 5IVE	Vis et rondelles de l'amortisseur de purge : TOUS LES 5IVE	Viti coperchi sfiato ammortizzatori e rondelle: TUTTI I 5IVE
LOS-3694	Center Differential Outdrive (2): ALL 5IVE	Mittleres Differential Antrieb (2) ALLE 5IVE	Coupelles de sortie de différentiel central (2) TOUS LES 5IVE	Outdrive differenziale centrale (2): TUTTI I 5IVE
LOS-3696	Steering Post Set(2): All 5IVE	Lenksäule Satz (2): Alle 5IVE	Lot de colonnes de direction (2) : Tous les 5IVE	Set supporti sterzo (2): Tutti i 5IVE
LOS-3697	Hinge Pin Brace Set, Rear, Aluminum: ALL 5IVE	Scharnierstiftklammer Satz, Hinten, Aluminium: ALLE 5IVE	Jeu de supports/renforts d'axes de charnière arrière, aluminium TOUS LES 5IVE	Set staffe per perni di cerniera, posteriore, alluminio: TUTTI I 5IVE
LOS-3698	ESC Tray, Switch and Plug Mount IC5: 5IVE-TE	Trägerplatte Geschwindigkeitsregler, Schalter und Steckerhalterung IC5: 5IVE-TE	Plateau ESC, interrupteur et connecteur IC5 : 5IVE-TE	Vassoio ESC, interruttore e supporto spina IC5: 5IVE-TE
LOS-3699	Shock Tower, Rear: 5IVE-T 3.0	Stoßdämpferbrücke, Heck: 5IVE-T 3.0	Tour d'amortisseur, arrière : 5IVE-T 3.0	Torre ammortizzatore, Posteriore: 5T 3.0
LOS-3700	Suspension Arm Set, Front (2): 5IVE-3.0	Querlenker-Satz vorne/hinten (2): 5IVE-3.0	Jeu de bras de suspension avant (2) : 5IVE-3.0	Set bracci sospensione, Anteriore (2): 5IVE-3.0
LOS-3701	Servo Saver Tube, Nut and Elastomer: 5IVE-3.0	Servo-Saver-Rohr, Mutter und Elastomer: 5IVE-3.0	Tube, écrou et élastomère du Servo Saver : 5IVE-3.0	Tubo salva servo, dado ed elastomero: 5IVE-3.0

#	DESCRIPTION	BESCHREIBUNG	DESCRIPTION	DESCRIZIONE
LOS-3702	Steering Linkage Set: 5IVE-3.0	Lenkstangensatz: 5IVE-3.0	Ensemble tringlerie de direction : 5IVE-3.0	Kit leveraggi di sterzo: 5IVE-3.0
LOS-3703	Rear Toe Block and Chassis Brace Screw: All 5IVE	Hinterer Spurstangenblock und Schraube der Karosseriestrebe: Alle 5IVE	Bloc de pincement arrière et Vis de renfort de châssis : Tous les 5IVE	Blocco toe posteriore e vite del rinforzo del telaio: tutti i 5IVE
LOS-3704	32mm Taper Shock Piston Blank (4): 5IVE-T 3.0	32 mm Stoßdämpferkolben leer (4): 5IVE-T 3.0	Piston d'amortisseur conique vierge de 32 mm (4) : 5IVE-T 3.0	Pistoni ammortizzatore conici vuoti 32 mm (4): 5T 3.0
LOS-3705	F/R Driveshaft & CV Coupler (1): ALL 5IVE	F/R-Antriebswelle und CV-Kupplung (1): ALLE 5IVE	Arbre de transmission avant/arrière et coupleur CV (1) : TOUS LES 5IVE	Albero di trasmissione A/P e giunto CV (1): tutti i 5IVE
LOS-3706	Battery Tray and Straps: 5IVE-TE	Akkualterung und Bänder: 5IVE-TE	Sangles et supports de batterie 5IVE-TE	Vaschetta batteria e fascetta: 5IVE-TE
LOS-3708	Motor Mount Insert 17 for 67t spur: 5IVE-TE	Motorhalterung Einsatz 17 für 67t Stirnrad: 5IVE-TE	Insert de support moteur 17 pour couronne dentée 67 dents : 5IVE-TE	Inserto supporto motore 17 per corona 67T: 5IVE-TE
LOS-3709	Bumper Brace Set, Rear: 5IVE-T 3.0	Stoßfängerstreben-Satz, hinten: 5IVE-T 3.0	Ensemble de renforts de pare-chocs, arrière : 5IVE-T 3.0	Set rinforzo paraurti, posteriore: 5T 3.0
LOS-3710	Center & Front Top Cage Support Set: 5IVE-T 3.0	Mittlerer und vorderer oberer Käfigträgersatz: 5IVE-T 3.0	Ensemble de support de cage centre et avant : 5IVE-T 3.0	Set supporti gabbia superiore anteriore e centrale: 5T 3.0
LOS-3711	Spindle Carrier Set, Front, 10 deg (2): All 5IVE	Spindelträgersatz, Vorn, 10 Grad (2): Alle 5IVE	Jeu de supports de fusée avant, 10 degrés (2) : Tous les 5IVE	Set portafuselli, anteriore, 10° (2): tutti i 5IVE
LOS-3712	Right Side Cage, Door: 5IVE-T 3.0	Rechte Seite Käfig, Tür: 5IVE-T 3.0	Cage latérale droite, porte : 5IVE-T 3.0	Gabbia laterale destra, porta: 5T 3.0
LOS-3713	Differential Seal & Hardware Set (1): ALL 5IVE	Differentialgetriebedichtung und Hardware (1): ALLE 5IVE	Jeu de joints d'étanchéité et quincaillerie de différentiel (1) : TOUS LES 5IVE	Set bulloneria e guarnizioni differenziale (1): tutti i 5IVE
LOS-3714	Nutted Shock Shaft, Rear (2): 5IVE-T 3.0	Kolbenstange mit Mutter, Heck (2) 5IVE-T 3.0	Tiges d'amortisseur filetées (avec écrou), arrière (2) : 5IVE-T 3.0	Aste ammortizzatori con dado, posteriori (2): 5T 3.0
LOS-3715	Hinge Pin Brace Covers, F/R (4): ALL 5IVE	Scharnierstiftklammerabdeckungen, F/R (4): ALLE 5IVE	Couvercles de support d'axe d'articulation, avant/arrière(4) : TOUS LES 5IVE	Copri rinforzi perni cerniere, A/P (4): tutti i 5IVE
LOS-3716	Outdrive O-rings & Diff Gaskets (3): ALL 5IVE	O-Ringe & Differentialdichtungen (3): ALLE 5IVE	Joints toriques de coupelles de sortie et joints d'étanchéité de différentiel (3) : TOUS LES 5IVE	O-ring outdrive e guarnizioni diff. (3): tutti i 5IVE
LOS-3717	Gear Box Set, Rear, Electric: 5IVE-TE	Getriebebesatz, hinten, elektrisch: 5IVE-TE	Jeu de boîtier/carter de transmission arrière, électrique 5IVE-TE	Set cambio, posteriore, veicolo elettrico: 5IVE-TE
LOS-3718	Wheel, Shock and Multi-Wrench Set: 5IVE-T 3.0	Rad-, Stoßdämpfer- und Kombischlüsselsatz: 5IVE-T 3.0	Jeu de roues, d'amortisseurs et de clés multiples : 5IVE-T 3.0	Set multi-chiave per cerchi e ammortizzatori: 5T 3.0
LOS-3719	Dual Sided Servo Saver and Bellcrank Set: 5IVE-3.0	Doppelseitiger Servo Saver und Umlenkhebelsatz: 5IVE-3.0	Ensemble de palonnier de direction à double plateau (ou double ressort) et de bielle de renvoi : 5IVE-T -3.0	Salva servo a doppio lato e leva di sterzo: 5IVE-3.0
LOS-3720	Steering Rack and Hardware: 5IVE-3.0	Zahnstange und Hardware: 5IVE-3.0	Crémaillère de direction et quincaillerie (ou Ensemble de crémaillère et visserie) 5IVE-T -3.0	Cremagliera e bulloneria: 5IVE-3.0
LOS-3721	Main Chassis Plate, Electric: 5IVE-TE	Hauptkarosserieplatte, Elektrisch: 5IVE-TE	Plaque principale du châssis, électrique : 5IVE-TE	Piastra telaio principale, veicoli elettrici: 5IVE-TE
LOS-3723	Servo Mount & Receiver Box: 5IVE-3.0	Servohalterung und Empfängerbox: 5IVE-3.0	Support de servo et boîte de récepteur 5IVE-3.0	Supporto servo e scatola ricevitore: 5IVE-3.0
LOS-3724	CntrDiffMountRear&Top w/Beaering Inserts: 5IVE-TE	Hintere und obere Mitteldifferenzial-Halterung mit Lagereinsätzen: 5IVE-TE	Support arrière et supérieur de différentiel central avec inserts de roulements : 5IVE-TE	Supporto diff. centrale post. e sup. con inserti per cuscinetti: 5IVE-TE

#	DESCRIPTION	BESCHREIBUNG	DESCRIPTION	DESCRIZIONE
LOS-3725	Gear Box Set, Front: ALL 5IVE	Getriebesatz, vorne: ALLE 5IVE	Ensemble de boîte de vitesses, avant : TOUS LES 5IVE	Set scatola cambio, anteriore: tutti i 5IVE
LOS-3729	Pinion Gear 17T, Mod 1.5, 8mm "D" Shaft: 5IVE-TE	Zahnradgetriebe, 17T, Mod 1,5 M, 8 mm „D“ Welle: 5IVE-TE	Pignon moteur 17 dents, Module 1.5, Arbre en « D » de 8 mm 5IVE-TE	Pignone 17T, Mod 1,5, albero D da 8 mm: 5IVE-TE
LOS-3731	Front Spring, 11.3 lb rate, Blue (2): 5IVE-T 3.0	Vordere Feder, 11,3 lb Federhärte, Blau (2): 5IVE-T 3.0	Ressort avant, taux de 11,3 lb, bleu (2) : 5IVE-T 3.0	Molla anteriore, tasso 11,3 lb, Blu (2): 5T 3.0
LOS-3732	Aluminum Diff Housing: ALL 5IVE	Aluminium Differentialgehäuse: ALLE 5IVE	Boîtier de différentiel en aluminium TOUS LES 5IVE	Cassa differenziale in alluminio: tutti i 5IVE
LOS-3734	Window Net Set: 5IVE-T 3.0	Fensternetz-Satz: 5IVE-T 3.0	Jeu de filets de fenêtre : 5IVE-T 3.0	Set reti per finestri: 5T 3.0
LOS-3735	Rear Spring 13.1 lb rate, Orange (2): 5IVE-T 3.0	Hintere Feder 13,1 lb Federhärte, Orange (2): 5IVE-T 3.0	Ressort arrière, taux de 13,1 lb, Orange (2) : 5IVE-T 3.0	Molla posteriore tasso 13,1 lb, Arancione (2): 5T 3.0
LOS-3736	Front Spring 12.3 lb rate, Red (2): 5IVE-T 3.0	Vordere Feder 12,3 lb Federhärte, Rot (2): 5IVE-T 3.0	Ressort avant, taux de 12,3 lb, Rouge (2) : 5IVE-T 3.0	Molla anteriore tasso 12,3 lb, Rosso (2): 5T 3.0
LOS-3737	Rear Spring, 10.4 lb rate, Blue (2): 5IVE-T 3.0	Hintere Feder, 10,4 lb Federhärte, Blau (2): 5IVE-T 3.0	Ressort arrière, taux de 10,4 lb, Bleu (2) : 5IVE-T 3.0	Molla posteriore, tasso 10,4 lb, Blu (2): 5T 3.0
LOS-3738	Inner Axle Bearing, 20x32x7mm (4): ALL 5IVE	Innenachsenlager, 20x32x7mm (4): ALLE 5IVE	Roulement intérieur d'essieu, 20x32x7mm (4) : TOUS LES 5IVE	Cuscinetti interni per assale, 20x32x7mm (4): tutti i 5IVE
LOS-3739	Diff Support Bearing, 15x24x5mm Flanged(6):ALL 5IVE	Differential-Stützlager, 15x24x5mm mit Flansch(6):ALL 5IVE	Roulement de support de différentiel, 15x24x5mm à collerette(6): ALL 5IVE	Cuscinetto supporto differenziale, 15x24x5mm, flangiato (6): TUTTI I 5IVE
LOS-3745	Rear Spring 12.2 lb rate, White (2): 5IVE-T 3.0	Hintere Feder 12,2 lb Federhärte, Weiß (2): 5IVE-T 3.0	Ressort arrière, taux de 12,2 lb, Blanc (2) : 5IVE-T 3.0	Molla posteriore tasso 12,2 lb, Bianco (2): 5T 3.0
LOS-3746	Rear Spring 11.3 lb rate, Red (2): 5IVE-T 3.0	Hintere Feder 11,3 lb Federhärte, Rot (2): 5IVE-T 3.0	Ressort arrière, taux de 11,3 lb, Rouge (2) : 5IVE-T 3.0	Molla posteriore tasso 11,3 lb, Rosso (2): 5T 3.0
LOS-3747	10x15x4mm Ball Bearing (4): ALL 5IVE	10 x15 x 4 mm Kugellager (4): ALLE 5IVE	Roulement à billes 10x15 x4 mm (4) : TOUS LES 5IVE	Cuscinetti a sfera 10x15x4 mm (4): tutti i 5IVE
LOS-3748	Front Spring 13.6 lb rate, White (2): 5IVE-T 3.0	Vordere Feder 13,6 lb Federhärte, Weiß (2): 5IVE-T 3.0	Ressort avant, taux de 13,6 lb, Blanc (2) : 5IVE-T 3.0	Molla anteriore tasso 13,6 lb, Bianco (2): 5T 3.0
LOS-3749	Front Spring 14.2 lb rate, Orange (2): 5IVE-T 3.0	Vordere Feder 14,2 lb Federhärte, Orange (2): 5IVE-T 3.0	Ressort avant, taux de 14,2 lb, Orange (2) : 5IVE-T 3.0	Molla anteriore tasso 14,2 lb, Arancione (2): 5T 3.0
LOS-3750	Outer Axle Bearing, 12x24x6mm (4): ALL 5IVE	Außenachsenlager 12 x 24 x 6 mm (4): ALLE 5IVE	Roulements d'essieu extérieur 12x24x6 mm (4) : TOUS LES 5IVE	Cuscinetti assale esterni, 12x24x6 mm (4): tutti i 5IVE
LOS-3751	Diff Pinion Bearings, 9x20x6mm (4): ALL 5IVE	Diff-Ritzellager, 9x20x6mm (4): ALLE 5IVE	Roulements de pignon de différentiel, 9x20x6mm (4) : TOUS LES 5IVE	Cuscinetti pignone differenziale, 9x20x6mm (4): tutti i 5IVE
LOS-3752	6x10x3 Ball Bearing (4): ALL 5IVE	6 x 10 x 3 mm Kugellager (4): ALLE 5IVE	Roulement à billes 6x10x3 (4) : TOUS LES 5IVE	Cuscinetti a sfera 6x10x3 mm (4): tutti i 5IVE
LOS-3753	Pinion Gear 16T, Mod 1.5, 8mm "D" Shaft: 5IVE-TE	Zahnradgetriebe, 16T, Mod 1,5 M, 8 mm „D“ Welle: 5IVE-TE	Pignon moteur 16 dents, Module 1.5, Arbre en « D » de 8 mm 5IVE-TE	Pignone 16T, Mod 1,5, albero D da 8 mm: 5IVE-TE
LOS-3765	Replacement Cooling Fan, 50mm w/Losi Fan Cover (2): 5IVE-TE	Ersatzkühlgebläse, 50 mm mit Lüfterabdeckung (2): 5IVE-TE	Ventilateur de remplacement, 50mm avec couvercle de ventilateur Losi (2) : 5IVE-TE	Ventole di raffreddamento di ricambio, 50 mm, con copertura Losi (2): 5IVE-TE
LOS-3918	Flanged Nylock Nut, M5 STL (10)	Nylock-Mutter mit Flansch, M5 STL (10)	Écrou Nylock à embase (ou à collerette), M5, Acier (10)	Dado Nylock con flangia, M5 STL (10)
LOS-3919	Button Head Screws, M6 x 30mm STL (10)	Rundkopfschrauben, M6 x 30 mm STL (10)	Vis à tête bouton, M6 x 30 mm, Acier (10)	Viti a testa bombata, M6x30 mm STL (10)

#	DESCRIPTION	BESCHREIBUNG	DESCRIPTION	DESCRIZIONE
LOS-3920	Cap Head Screws, M5 x 25mm STL (10)	Inbusschrauben, M5 x 25 mm STL (10)	Vis à tête cylindrique (ou à six pans creux), M5 x 25 mm, Acier (10)	Viti a testa cilindrica esagono incassato, M5x25 mm STL (10)
LOS-3921	Button Head Screws, M5 x 35mm STL (10)	Rundkopfschrauben, M5 x 35 mm STL (10)	Vis à tête bouton, M5 x 35 mm, Acier (10)	Viti a testa bombata, M5x35 mm STL (10)
LOS-3922	Flat Head Screws, M5 x 16mm Flat Head (10)	Flachkopfschrauben, M5 x 16 mm Flachkopf (10)	Vis à tête fraisée, M5 x 16 mm (10)	Viti a testa piana, M5x16 mm (10)
LOS-3923	Flat Head Screws, M5 x 20mm STL (10)	Flachkopfschrauben, M5 x 20 mm STL (10)	Vis à tête fraisée, M5 x 20 mm, Acier (10)	Viti a testa piana, M5x20 mm STL (10)
LOS-3924	Set Screw, M4 x 8mm Cup Point, STL (10)	Stellschraube M4 x 8 mm Ringschneide, STL (10)	Vis sans tête (ou vis de pression), M4 x 8 mm, Pointe creuse, Acier (10)	Viti di blocco, M4x8 mm, punta a coppa STL (10)
LOS-3925	Button Head Screws, M4 x 25mm STL (10)	Rundkopfschrauben, M4 x 25 mm STL (10)	Vis à tête bombée, M4 x 25 mm Acier (10)	Viti a testa bombata, M4x25 mm STL (10)
LOS-3926	Cap Head Screws, M4 x 20mm STL (10)	Inbusschrauben, M4 x 20 mm STL (10)	Vis d'assemblage creuses, M4 x 20 mm Acier (10)	Viti a testa cilindrica esagono incassato, M4x20 mm STL (10)
LOS-3927	Button Head Screws, M4 x 40mm STL (10)	Rundkopfschrauben, M4 x 40 mm STL (10)	Vis à tête bombée, M4 x 40 mm Acier (10)	Viti a testa bombata, M4x40 mm STL (10)
LOS-3928	Button Head Screws, M4 x 30mm STL (10)	Rundkopfschrauben, M4 x 30 mm STL (10)	Vis à tête bombée, M4 x 30 mm Acier (10)	Viti a testa bombata, M4x30 mm STL (10)
LOS-3929	Button Head Screws, M4 x 20mm STL (10)	Rundkopfschrauben, M4 x 20 mm STL (10)	Vis à tête bombée, M4 x 20 mm Acier (10)	Viti a testa bombata, M4x20 mm STL (10)
LOS-3930	Button Head Screws, M5 x 30mm STL (10)	Rundkopfschrauben, M5 x 30 mm STL (10)	Vis à tête bombée, M5 x 30 mm Acier (10)	Viti a testa bombata, M5x30 mm STL (10)
LOS-3931	Flat Head Screws, M6 x 16mm STL (10)	Flachkopfschrauben, M6 x 16 mm STL (10)	Vis à tête plate, M6 x 16 mm Acier (10)	Viti a testa piana, M6x16 mm STL (10)
LOS-3932	Flat Head Screws, M6 x 20mm STL (10)	Flachkopfschrauben, M6 x 20 mm STL (10)	Vis à tête plate, M2 x 20 mm Acier (10)	Viti a testa piana, M6x20 mm STL (10)
LOS-3933	Flat Head Screws, M5 x 30mm STL (10)	Flachkopfschrauben, M5 x 30 mm STL (10)	Vis à tête plate, M5 x 30 mm Acier (10)	Viti a testa piana, M5x30 mm STL (10)
LOS-3934	Flat Nut, M5 STL: (10)	Flache Mutter, M5 STL: (10)	Ecrou plat, M5 Acier : (10)	Dado piatto, M5 STL: (10)
LOS-3935	Pinion Gear Shim STL (10): All 5IVE	Ritzelscheibe STL (10): Alle 5IVE	Cale de pignon Acier (10) : Tous les 5IVE	Spessore ingranaggio pignone STL (10): tutti i 5IVE
LOS-3936	Washer, 6.4mm x 12mm x 1.6mm STL (10)	Unterlegscheibe, 6,4mm x 12mm x 1,6mm STL (10)	Rondelle, 6,4mm x 12mm x 1,6mm Acier (10)	Rondelle, 6,4x12x1,6 mm STL (10)
LOS-3937	Button Head Screws, M4 x 12mm STL (10)	Rundkopfschrauben, M4 x 12 mm STL (10)	Vis à tête bombée, M4 x 12 mm Acier (10)	Viti a testa bombata, M4x12 mm STL (10)
LOS-3938	Button Head Screws, M4 x 16mm STL (10)	Rundkopfschrauben, M4 x 16 mm STL (10)	Vis à tête bombée, M4 x 16 mm Acier (10)	Viti a testa bombata, M4x16 mm STL (10)
LOS-3939	Cap Head Screws, M5 x 20mm STL (10)	Inbusschrauben, M5 x 20 mm STL (10)	Vis à tête cylindrique M5 x 20 mm, Acier (10)	Viti a testa cilindrica esagono incassato, M5x20 mm STL (10)
LOS-3940	Button Head Screws, M4 x 10mm STL (10)	Rundkopfschrauben, M4 x 10 mm STL (10)	Vis à tête bombée, M4 x 10 mm Acier (10)	Viti a testa bombata, M4x10 mm STL (10)
LOS-3941	Button Head Screws, M4 x 50mm STL (10)	Rundkopfschrauben, M4 x 50 mm STL (10)	Vis à tête bombée, M4 x 50 mm Acier (10)	Viti a testa bombata, M4x50 mm STL (10)
LOS-3942	Cap Head Screws, M4 x 25mm STL (10)	Inbusschrauben, M4 x 25 mm STL (10)	Vis d'assemblage creuses, M4 x 25 mm Acier (10)	Viti a testa cilindrica esagono incassato, M4x25 mm STL (10)
LOS-3943	Button Head Screws, M5 x 12mm STL (10)	Rundkopfschrauben, M5 x 12 mm STL (10)	Vis à tête bombée, M5 x 12 mm Acier (10)	Viti a testa bombata, M5x12 mm STL (10)
LOS-3944	Button Head Screws, M4 x 35mm STL (10)	Rundkopfschrauben, M4 x 35 mm STL (10)	Vis à tête bombée, M4 x 35 mm Acier (10)	Viti a testa bombata, M4x35 mm STL (10)
LOS-3945	Nylock Nut M6 STL (10)	Nylock-Mutter M6 STL (10)	Contre-écrou Nylock, M6 Acier (10)	Dado Nylock M6 STL (10)
LOS-3946	Nylock Nut M5 STL (10)	Nylock-Mutter M5 STL (10)	Contre-écrou Nylock, M5 Acier (10)	Dado Nylock M5 STL (10)
LOS-3951	Setscrew, M5 x 4mm, Flat Point, STL (10)	Stellschraube, M5 x 4mm, Madenschraube, STL (10)	Vis de fixation M5 x 4 mm, bout plat Acier (10)	Vite di fermo, M5x4 mm, punta piana, STL (10)
LOS-3952	Flat Head Screws, M4 x 16mm STL (10)	Flachkopfschrauben, M4 x 16 mm STL (10)	Vis à tête plate, M4 x 16 mm Acier (10)	Viti a testa piana, M4x16 mm STL (10)

#	DESCRIPTION	BESCHREIBUNG	DESCRIPTION	DESCRIZIONE
LOS-3953	Flat Head Screws, M5 x 12mm STL (10)	Flachkopfschrauben, M5 x 12 mm STL (10)	Vis à tête plate, M5 x 12 mm Acier (10)	Viti a testa piana, M5x12 mm STL (10)
LOS-3954	Flat Head Screws, M5 x 25mm STL (10)	Flachkopfschrauben, M5 x 25 mm STL (10)	Vis à tête plate, M5 x 25 mm Acier (10)	Viti a testa piana, M5x25 mm STL (10)
LOS-3955	Button Head Screws, M5 x 16mm STL (10)	Rundkopfschrauben, M5 x 16 mm STL (10)	Vis à tête bombée, M5 x 16 mm Acier (10)	Viti a testa bombata, M5x16 mm STL (10)
LOS-3956	Button Head Screws, M5 x 20mm STL (10)	Rundkopfschrauben, M5 x 20 mm STL (10)	Vis à tête bombée, M5 x 20 mm Acier (10)	Viti a testa bombata, M5x20 mm STL (10)
LOS-3957	Button Head Screws, M5 x 25mm STL (10)	Rundkopfschrauben, M5 x 25 mm STL (10)	Vis à tête bombée, M5 x 25 mm Acier (10)	Viti a testa bombata, M5x25 mm STL (10)
LOS-3958	Set Screw, M4 x 5mm Cup Point, STL (10)	Stellschraube M4 x 5 mm Ringschneide, STL (10)	Vis de pression M4 x 5 mm à bout cuvette Acier (10)	Viti di blocco, M4x5 mm, punta a coppa (10)
LOS-3959	Set Screw, M4 x 5mm Flat Point, STL (10)	Stellschraube M4 x 5 mm Madenschraube, STL (10)	Vis de pression M4 x 5 mm à bout cuvette Acier (10)	Viti di blocco, M4x5 mm, punta piatta (10)
LOS-3960	Set Screw, M5 x 6mm Cup Point, STL (10)	Stellschraube M5 x 6 mm Ringschneide, STL (10)	Vis de pression M5 x 6 mm à bout cuvette Acier(10)	Viti di blocco, M5x6 mm, punta a coppa (10)
LOS-3961	Set Screw, M5 x 35mm Flat Point, STL (10)	Stellschraube, M5 x 35 mm, Madenschraube, STL (10)	Vis de pression M5 x 35 mm, bout plat Acier (10)	Viti di blocco, M5x35 mm, punta piatta (10)
LOS-3962	Lower Shock Mounting Screw Set, 5mm (6): All 5IVE	Satz untere Stoßdämpferbefestigungsschrauben, 5 mm (6): Alle 5IVE	Jeu de vis de montage de l'amortisseur inférieur, 5mm (6) : Tous les 5IVE	Viti di blocco montaggio amm. inferiori, 5 mm (6): tutti i 5IVE
LOS-3963	Shim Set STL (24): ALL 5IVE	Unterlegscheiben-Satz STL (24): ALLE 5IVE	Jeu de cales Acier (24) : TOUS LES 5IVE	Set di spessori STL (24): tutti i 5IVE
LOS-3964	Washer, 3.2mm x 7.0mm x 0.5mm STL (10)	Unterlegscheibe, 3,2mm x 7,0mm x 0,5mm STL (10)	Rondelle, 3,2mm x 7,0mm x 0,5mm Acier (10)	Rondelle, 3,2x7,0x0,5 mm STL (10)
LOS-3965	Nylock Nut M4 STL (10)	Nylock-Mutter, M4 STL (10)	Écrou nyloc, M4 Acier (10)	Dado Nylock M4 STL (10)
LOS-4001	Body Set, Complete, Metallic Blue: 5IVE-T 3.0	Gehäusesatz, komplett, Blau-Metallic: 5IVE-T 3.0	Ensemble de carrosseries, complet, bleu métallique : 5IVE-T 3.0	Set carrozzeria, Completo, Blu metallico: 5T 3.0
LOS-4002	Body Set Complete, Flourescent Orange: 5IVE-T 3.0	Gehäusesatz komplett, Neon-Orange: 5IVE-T 3.0	Ensemble complet de carrosserie, orange fluorescent : 5IVE-T 3.0	Set carrozzeria, Completo, Arancione fluorescente: 5T 3.0
LOS-4004	Body Panel, Door, L/R, Metallic Blue: 5IVE-T 3.0	Karosserieteil, Tür, L/R, Metallicblau: 5IVE-T 3.0	Panneau de carrosserie, porte, D/G, bleu métallique : 5IVE-T 3.0	Pannello carrozzeria, porta, SX/DX, Blu metallico: 5T 3.0
LOS-4005	Body Panel,Door,L/R,Flourescent Orange: 5IVE-T 3.0	Karosserieteil, Tür, L/R, Neon-Orange: 5IVE-T 3.0	Panneau de carrosserie, porte, G/D, orange fluorescent : 5IVE-T 3.0	Pannello carrozzeria, porta, SX/DX, Arancione fluorescente: 5T 3.0
LOS-4007	Body Panel, Hood & Roof, Metallic Blue: 5IVE-T 3.0	Karosserieteil, Motorhaube und Dach, Metallicblau: 5IVE-T 3.0	Panneau de carrosserie, capot et toit, bleu métallique : 5IVE-T 3.0	Pannello carrozzeria, cofano e tetto, Blu metallico: 5T 3.0
LOS-4008	Body Panel,Hood&Roof, Flourescent Orange:5IVE-T 3.0	Karosserieteil, Motorhaube und Dach, Neon-Orange:5IVE-T 3.0	Panneau de carrosserie, capot et toit, orange fluorescent:5IVE-T 3.0	Pannello carrozzeria, cofano e tetto, Arancione fluorescente: 5IVE-T 3.0
LOS-4010	BodyPanel,RearFender,L/R,Metallic Blue: 5IVE-T 3.0	Karosserieteil, Hinterer Kotflügel, L/R, Metallicblau: 5IVE-T 3.0	Panneau de carrosserie, aile arrière, D/G, bleu métallique : 5IVE-T 3.0	Pannello carrozzeria, parafango posteriore, SX/DX, Blu metallico: 5T 3.0
LOS-4011	BodyPanel,RearFender,L/R,Flo Orange: 5IVE-T 3.0	Karosserieteil, Hinterer Kotflügel, L/R, Neon-Orange: 5IVE-T 3.0	Panneau de carrosserie, aile arrière, G/D, Flo Orange : 5IVE-T 3.0	Pannello carrozzeria, parafango posteriore, SX/DX, Arancione fluorescente: 5T 3.0
LOS-4014	Flat Head Screws, M4 x 12mm STL (10)	Flachkopfschrauben, M4 x 12 mm STL (10)	Vis à tête plate, M4 x 12 mm Acier (10)	Viti a testa piana, M4x12 mm STL (10)
LOS-4029	Cap Head Screws, M3 x 20mm STL (10)	Inbusschrauben, M3 x 20 mm STL (10)	Vis d'assemblage creuses, M3 x 20 mm Acier (10)	Viti a testa cilindrica esagono incassato, M3x20 mm STL (10)

#	DESCRIPTION	BESCHREIBUNG	DESCRIPTION	DESCRIZIONE
LOS-4030	Flanged Nylock Nut, M6 STL (10)	Nylock-Mutter mit Flansch, M6 STL (10)	Écrou Nylock à embase (ou à collerette), M6, Acier (10)	Dado Nylock con flangia, M6 STL (10)
LOS-4031	Flat Head Screws, M4 x 10mm STL (10)	Flachkopfschrauben, M4 x 10 mm STL (10)	Vis à tête plate, M4 x 10 mm Acier (10)	Viti a testa piana, M4x10 mm STL (10)
LOS-4032	Rear Toe Block and Brace Screws: ALL 5IVE	Schrauben hinterer Spurstangenblock und Strebe: ALLE 5IVE	Vis pour le support d'axe de suspension arrière (Toe Block) et le renfort (Brace) TOUS LES 5IVE	Blocco toe posteriore e viti rinforzo: tutti i 5IVE
PRO1035400	1/5 Mirage TT, F/R Tires, FIRM (2): 5IVE-T 3.0	1:5 Mirage TT, V/H Reifen, FIRM (2): 5IVE-T 3.0	1/5 Mirage TT, pneus avant/arrière, FERME (2) : 5IVE-T 3.0	Pneumatici 1/5 Mirage TT, A/P, gomma dura (2): 5T 3.0
PRO287805	Wheel and Beadlock Set, Gray(2): 5IVE-T 3.0	Rad und Beadlock-Satz, Grau (2): 5IVE-T 3.0	Ensemble de roues et de cerclages de jante (beadlock), Gris (2) 5IVE-T 3.0	Set cerchi e beadlock, Grigio (2): 5T 3.0
PRO649400	1/5 F/R Tire Insert (2): 5IVE-T 3.0	1:5 V/H-Reifeneinsatz (2): 5IVE-T 3.0	Insert de pneu (mousse) avant/arrière, échelle 1/5 (2) 5IVE-T 3.0	Inserti pneumatici 1/5 A/P (2): 5T 3.0
SPM2340	DX3 SMART DSMR 3CH TX w/SR315	DX3 SMART DSMR TX mit 3 Kanälen mit SR315	Émetteur DX3 SMART DSMR 3 canaux avec SR315	TX DX3 SMART DSMR 3CH con SR315
SPMSR6200A	6200A 6CH AVC Surface RX	6200A 6Kan AVC Oberflächenempfänger	6200A 6CH AVC Surface RX	6200A 6CH AVC RX di superficie
SPMSS6510	1/5 Scale High Torque Servo	Drehmomentstarker Servo Maßstab 1:5	Servo à couple élevé à l'échelle 1/5	Servo coppia elevata scala 1/5
SPMXSE2250	Firma 250A Brushless Smart ESC, 6S - 12S: Dual IC5	Firma 250 A bürstenloser Smart-Geschwindigkeitsregler, 6S-12S: Doppel-IC5	Contrôleur Électronique de Vitesse (ESC) sans balais (Brushless) Smart Firma 250A, 6S à 12S : Double IC5	Smart ESC Avian 250 A Brushless 6S-12S: Doppio IC5
SPMXSM5600	FIRMA 70120 560KV Brushless Motor, Smooth Can: 8mm	FIRMA 70120 560KV Bürstenloser Motor, glattes Gehäuse: 8 mm	Moteur sans balais FIRMA 70120, 560KV, Carter lisse 8 mm	FIRMA 70120 560 KV Motore Brushless, Smooth Can: 8 mm
SPMXSMH3	Motor Heatsink 70120	Motorkühlkörper 70120	Dissipateur thermique du moteur 70120	Dissipatore motore 70120
TLR5963	Flathead Screw, M3 x 12mm (10)	Flachkopfschraube, M3 x 12mm (10)	Vis à tête plate, M3 x 12 mm (10)	Viti testa piana, M3x12 mm (10)

## RECOMMENDED PARTS | EMPFOHLENE TEILE | PIÈCES RECOMMANDÉES | PARTI CONSIGLIATE

#	DESCRIPTION	BESCHREIBUNG	DESCRIPTION	DESCRIZIONE
SPMXB4S100	10000mAh 4S 14.8V Smart Pro Basher LiPo 120C IC5	10000 mAh 4S 14,8 V Smart Pro Basher LiPo 120C IC5	Batterie LiPo Smart Pro Basher 10000mAh 4S 14.8V 120C IC5	10000 mAh 4S 14,8 V Smart Pro Basher LiPo 120C IC5
SPMXB6S68	6800mAh 6S 22.2V Smart Pro Basher LiPo 120C IC5	6800 mAh 6S 22,2 V Smart Pro Basher LiPo 120C IC5	6800mAh 6S 22.2V Smart Pro Basher LiPo 120C IC5	6800 mAh 6S 22,2 V Smart Pro Basher LiPo 120C IC5
SPMXC2000	Smart S2100 G2 AC Charger, 2x100W	Smart S2100 G2 AC-Ladegerät, 2x100W	Chargeur c.a. Smart S2100, 2 x 100 W	Caricabatterie Smart S2100 G2 CA, 2x100 W
SPMXC2010	Smart S2200 G2 AC Charger, 2x200W	Smart S2200 G2 Wechselstrom-Ladegerät, 2x200 W	Chargeur c.a. G2 S2200 Smart, 2x200 W	Caricabatterie Smart S2200 G2 CA, 2x200 W
SPM6130	DXC+ TX w/SR615 RX	DXC+ TX mit SR615 RX	Émetteur DXC+ avec récepteur SR315	Tx DXC+ con Rx SR615
SPM6425	iXSR+ Surface TX w/SR515	iXSR+ Oberfläche TX mit SR515	iXSR+ Surface TX avec/SR515	Tx iXSR+ di superficie con SR515
SPMR6130	DXC+ TX Only	Nur DXC+ TX	DXC+ TX Uniquement	Solo Tx DXC+

**OPTIONAL PARTS | OPTIONALE TEILE | PIÈCES FACULTATIVES | PARTI OPZIONALI**

#	DESCRIPTION	BESCHREIBUNG	DESCRIPTION	DESCRIZIONE
DYN2516	Straight Body Scissors	Gerade Karosserieschere	Ciseaux de carrosserie droits	Forbici dritte per scocca
DYNT2014	Machined Nut Driver 7mm	Gefräster Steckschlüssel 7 mm	Tournevis à écrou usiné 7 mm	Giradadi 7 mm
DYNT2015	Machined Nut Driver 8mm	Gefräster Steckschlüssel 8 mm	Tournevis à écrou usiné 8 mm	Giradadi 8mm
DYNT2031	Machined Hex Driver 1.5mm	Gefräster Sechskantschlüssel 1,5 mm	Tournevis à écrou usiné 1,5 mm	Cacciavite a brugola 1,5 mm
LOS-3632	MotorMountInsert 14.5 & 19.5 for 67t spur: 5IVE-TE	Motorhalterungeinsatz 14,5 & 19,5 für 67t Stirnrad: 5IVE-TE	Insert de support moteur 14.5 mm et 19.5 mm pour pignon droit (couronne) de 67 dents 5IVE-TE	Inserto supporto motore 14,5 & 19,5 per pignone 67T: 5IVE-TE
LOS-3633	MotorMountInsert 13.5 & 20.5 for 67t spur: 5IVE-TE	Motorhalterungeinsatz 13,5 & 20,5 für 67t Stirnrad: 5IVE-TE	Insert de support moteur 13,5 mm et 20,5 mm pour pignon droit (couronne) de 67 dents 5IVE-TE	Inserto supporto motore 13,5 & 20,5 per pignone 67T: 5IVE-TE
LOS-3636	Mechanical Brake Mount and Brace: 5IVE-TE	Mechanische Bremsenhalterung und -stütze: 5IVE-TE	Support et renfort de frein mécanique 5IVE-TE	Supporto e rinforzo del freno meccanico: 5IVE-TE
LOS-3649	Body Panel, Hood and Roof, White: 5IVE-T 3.0	Karosserieteil, Motorhaube und Dach, Weiß: 5IVE-T 3.0	Panneau de carrosserie, capot et toit, Blanc : 5IVE-T 3.0	Pannello carrozzeria, cofano e tetto, Bianco: 5T 3.0
LOS-3664	MotorMountInsert 16.5 & 17.5 for 67t spur: 5IVE-TE	Motorhalterungeinsatz 16,5 & 17,5 für 67t Stirnrad: 5IVE-TE	Insert de support moteur 16,5 mm et 17,5 mm pour pignon droit (couronne) de 67 dents 5IVE-TE	Inserto supporto motore 16,5 & 17,5 per pignone 67T: 5IVE-TE
LOS-3665	MotorMountInsert 15 & 19 for 67t spur: 5IVE-TE	Motorhalterungeinsatz 15 & 19 für 67t Stirnrad: 5IVE-TE	Insert de support moteur 15 mm et 19 mm pour pignon droit (couronne) de 67 dents 5IVE-TE	Inserto supporto motore 15 & 19 per pignone 67T: 5IVE-TE
LOS-3691	MotorMountInsert 13 & 21 for 67t spur: 5IVE-TE	Motorhalterungeinsatz 13 & 21 für 67t Stirnrad: 5IVE-TE	Insert de support moteur 13 mm et 21 mm pour pignon droit (couronne) de 67 dents 5IVE-TE	Inserto supporto motore 13 & 21 per pignone 67T: 5IVE-TE
LOS-3692	MotorMountInsert 14 & 20 for 67t spur: 5IVE-TE	Motorhalterungeinsatz 14 & 20 für 67t Stirnrad: 5IVE-TE	Insert de support moteur 14 mm et 20 mm pour pignon droit (couronne) de 67 dents 5IVE-TE	Inserto supporto motore 14 & 20 per pignone 67T: 5IVE-TE
LOS-3695	Body Panel, Door, L/R, White: 5IVE-T 3.0	Karosserieteil, Tür, L/R, Weiß: 5IVE-T 3.0	Panneau de carrosserie, porte, D/G, Blanc : 5IVE-T 3.0	Pannello carrozzeria, porta, SX/DX, Bianco: 5T 3.0
LOS-3707	MotorMountInsert 15.5 & 18.5 for 67t spur: 5IVE-TE	Motorhalterungeinsatz 15,5 & 18,5 für 67t Stirnrad: 5IVE-TE	Insert de support moteur 15,5 mm et 18,5 mm pour pignon droit (couronne) de 67 dents 5IVE-TE	Inserto supporto motore 15,5 & 18,5 per pignone 67T: 5IVE-TE
LOS-3722	Body Panel, Rear Fender, L/R, White: 5IVE-T 3.0	Karosserieteil, hinterer Kotflügel, L/R, Weiß: 5IVE-T 3.0	Panneau de carrosserie, aile arrière, G/D, Blanc : 5IVE-T 3.0	Pannello carrozzeria, parafango posteriore, SX/DX, Bianco: 5T 3.0
LOS-3730	Pinion Gear 14T, Mod 1.5, 8mm "D" Shaft: 5IVE-TE	Zahnradgetriebe, 14T, Mod 1,5 M, 8 mm „D“ Welle: 5IVE-TE	Pignon moteur de 14 dents, Module 1.5, Arbre en « D » de 8 mm 5IVE-TE	Pignone 14T, Mod 1,5, albero D da 8 mm: 5IVE-TE
LOS-3733	Pinion Gear 19T, Mod 1.5, 8mm "D" Shaft: 5IVE-TE	Zahnradgetriebe, 19T, Mod 1,5 M, 8 mm „D“ Welle: 5IVE-TE	Pignon moteur de 19 dents, Module 1.5, Arbre en « D » de 8 mm 5IVE-TE	Pignone 19T, Mod 1,5, albero D da 8 mm: 5IVE-TE
LOS-3740	Pinion Gear 15T, Mod 1.5, 8mm "D" Shaft: 5IVE-TE	Zahnradgetriebe, 15T, Mod 1,5 M, 8 mm „D“ Welle: 5IVE-TE	Pignon moteur de 15 dents, Module 1.5, Arbre en « D » de 8 mm 5IVE-TE	Pignone 15T, Mod 1,5, albero D da 8 mm: 5IVE-TE
LOS-3741	Pinion Gear 18T, Mod 1.5, 8mm "D" Shaft: 5IVE-TE	Zahnradgetriebe, 18T, Mod 1,5 M, 8 mm „D“ Welle: 5IVE-TE	Pignon moteur de 18 dents, Module 1.5, Arbre en « D » de 8 mm 5IVE-TE	Pignone 18T, Mod 1,5, albero D da 8 mm: 5IVE-TE
LOS-3742	Pinion Gear 13T, Mod 1.5, 8mm "D" Shaft: 5IVE-TE	Zahnradgetriebe, 13T, Mod 1,5 M, 8 mm „D“ Welle: 5IVE-TE	Pignon moteur de 13 dents, Module 1.5, Arbre en « D » de 8 mm 5IVE-TE	Pignone 13T, Mod 1,5, albero D da 8 mm: 5IVE-TE
LOS-3743	Pinion Gear 20T, Mod 1.5, 8mm "D" Shaft: 5IVE-TE	Zahnradgetriebe, 20T, Mod 1,5 M, 8 mm „D“ Welle: 5IVE-TE	Pignon moteur de 20 dents, Module 1.5, Arbre en « D » de 8 mm 5IVE-TE	Pignone 20T, Mod 1,5, albero D da 8 mm: 5IVE-TE



#	DESCRIPTION	BESCHREIBUNG	DESCRIPTION	DESCRIZIONE
LOS-3744	Pinion Gear 21T, Mod 1.5, 8mm "D" Shaft: 5IVE-TE	Zahnradgetriebe, 21T, Mod 1,5 M, 8 mm „D“ Welle: 5IVE-TE	Pignon moteur de 21 dents, Module 1.5, Arbre en « D » de 8 mm 5IVE-TE	Pignone 21T, Mod 1,5, albero D da 8 mm: 5IVE-TE
LOS-3753	Pinion Gear 16T, Mod 1.5, 8mm "D" Shaft: 5IVE-TE	Zahnradgetriebe, 16T, Mod 1,5 M, 8 mm „D“ Welle: 5IVE-TE	Pignon moteur de 16 dents, Module 1.5, Arbre en « D » de 8 mm 5IVE-TE	Pignone 16T, Mod 1,5, albero D da 8 mm: 5IVE-TE
LOS-4000	Body Set, Complete, Black: 5IVE-T 3.0	Gehäusesatz, komplett, Schwarz: 5IVE-T 3.0	Ensemble cage, complet, noir : 5IVE-T 3.0	Set carrozzeria, Completo, Nero: 5T 3.0
LOS-4003	Body Panel Door, L/R, Black: 5IVE-T 3.0	Karosserieteil, Tür, L/R, Schwarz: 5IVE-T 3.0	Panneau de porte de carrosserie, G/D, Noir : 5IVE-T 3.0	Pannello carrozzeria, porta, SX/DX, Nero: 5T 3.0
LOS-4006	Body Panel, Hood & Roof, Black: 5IVE-T 3.0	Karosserieteil, Motorhaube und Dach, Schwarz: 5IVE-T 3.0	Panneau de carrosserie, capot et toit, Noir : 5IVE-T 3.0	Pannello carrozzeria, cofano e tetto, Nero: 5T 3.0
LOS-4009	Body Panel, Rear Fender, L/R, Black: 5IVE-T 3.0	Karosserieteil, hinterer Kotflügel, L/R, Schwarz: 5IVE-T 3.0	Panneau de carrosserie, aile arrière, G/D, Noir : 5IVE-T 3.0	Pannello carrozzeria, parafango posteriore, SX/DX, Nero: 5T 3.0
PRO287802	Wheel and Beadlock Set, Yellow (2): 5IVE-T 3.0	Rad und Beadlock-Satz, Gelb (2): 5IVE-T 3.0	Ensemble de roues et de cerclages de jante, Jaune (2) : 5IVE-T 3.0	Set cerchi e beadlock, Giallo (2): 5T 3.0
PRO287803	Wheel and Beadlock Set, Black (2): 5IVE-T 3.0	Rad und Beadlock-Satz, Schwarz (2): 5IVE-T 3.0	Ensemble de roues et de cerclages de jante, Noir (2) : 5IVE-T 3.0	Set cerchi e beadlock, Nero (2): 5T 3.0
PRO287804	Wheel and Beadlock Set, White (2): 5IVE-T 3.0	Rad und Beadlock-Satz, Weiß (2): 5IVE-T 3.0	Ensemble roue et verrou, Blanc (2) : 5IVE-T 3.0	Set cerchi e beadlock, Bianco (2): 5T 3.0
SPM6719	Spektrum Surface Transmitter Case	Spektrum Oberflächensender-Gehäuse	Boîtier de l'émetteur Spektrum DSMR	Custodia per trasmittente Spektrum di superficie
SPMSR615	SR615 DSMR 6-Channel Water Resistant Receiver	SR615 DSMR 6-Kanal-Empfänger, wasserdicht	Récepteur étanche (résistant à l'eau) SR615 DSMR 6 canaux	Ricevitore SR615 DSMR a 6 canali resistente all'acqua
SPMSS9110BL	S9110BL 1/5 Speed Metal Servo	S9110BL 1/5 Geschwindigkeit Metallservo	Servo métallique haute vitesse 1/5 S9110BL	S9110BL servo metallo velocità 1/5
SPMSS9120BL	S9120BL 1/5 Torque Metal Servo	S9120BL 1/5 Drehmoment Metallservo	Servo métallique haute vitesse 1/5 S9120BL	S9120BL servo metallo coppia 1/5
SPMX726S120	22.2V 7200mAh 6S 120C Smart G2 LiPo IC5	22,2 V 7200 mAh 6S 120C Smart G2 LiPo IC5	22,V 7200mAh 6S 120C Smart G2 LiPo IC5	22,2 V 7200 mAh 6S 120C Smart G2 LiPo IC5
SPMXCA501	Connector: IC5 Battery Set (2)	Anschluss: IC5 Akku-Satz (2)	Connecteur : Jeu de batteries IC5 (2)	Connettore: set batteria IC5 (2)
SPMXCA502	Connector: IC5 Device and IC5 Battery Set	Anschluss: IC5 Gerät und IC5 Akku-Satz	Connecteur : Dispositif IC5 et jeu de batteries IC5	Connettore: set Dispositivo IC5 e Batteria IC5
SPMXCA503	Connector: IC5 Device (2)	Anschluss: IC5 Gerät (2)	Connecteur : Dispositif IC5 (2)	Connettore: Dispositivo IC5 (2)
TLR74023	SILICONE SHOCK OIL, 30WT, 338CST, 4OZ	SILIKON-STOSSDÄMPFERÖL, 30 WT, 338 CST, 4 OZ	Huile silicone pour amortisseur, 30 WT, 338CST, (4 oz)	Olio ammortizzatori siliconico, 30WT, 338CST, 4OZ
TLR74024	SILICONE SHOCK OIL, 35WT, 420CST, 4OZ	SILIKON-STOSSDÄMPFERÖL, 35 WT, 420 CST, 4 OZ	Huile silicone pour amortisseur, 35 WT, 420CST, (4 oz)	Olio ammortizzatori siliconico, 35WT, 420CST, 4OZ
TLR74025	SILICONE SHOCK OIL, 40WT, 516CST, 4OZ	SILIKON-STOSSDÄMPFERÖL, 40WT, 516 CST, 4 OZ	HUILE SILICONE POUR AMORTISSEUR, 40 WT, 516 CST, 4 OZ	Olio ammortizzatori siliconico, 40WT, 516CST, 4OZ
TLR74026	SILICONE SHOCK OIL, 45WT, 610CST, 4OZ	SILIKON-STOSSDÄMPFERÖL, 45 WT, 610 CST, 4 OZ	Huile silicone pour amortisseur, 45 WT, 610CST, (4 oz)	Olio ammortizzatori siliconico, 45WT, 610CST, 4OZ
TLR74027	SILICONE SHOCK OIL, 50WT, 710CST, 4OZ	SILIKON-STOSSDÄMPFERÖL, 50 WT, 710 CST 4 OZ)	Huile silicone pour amortisseurs, 50 WT, 710CST, 4 oz	Olio ammortizzatori siliconico, 50WT, 710CST, 4OZ



©2026 Horizon Hobby, LLC.

Losi, Firma, AVC, IC5 and the Horizon Hobby logo are trademarks or registered trademarks of Horizon Hobby, LLC.

The Spektrum trademark is used with permission of Bachmann Industries, Inc.

All other trademarks or registered trademarks are property of their respective owners.

Other patents pending.

Created 12/25

LOS05022

1004667